

# Wattleseed 22



The Wattleseed 22, designed for 12.5m+ blocks, is a 4-bedroom, 2-bathroom home with a 2-car garage, perfect for families seeking a blend of comfort and modern living over a single-story. The open-plan floor plan unites the serene alfresco with the impressive kitchen and meals area, creating a harmonious flow of natural light. The master bedroom, located at the front with an ensuite and walk-in wardrobe, ensures privacy. This versatile design can adapt to a variety of needs, with options for a media room, kids' retreat, or study, making it a flexible choice for different lifestyles.

EMERGE

House Area

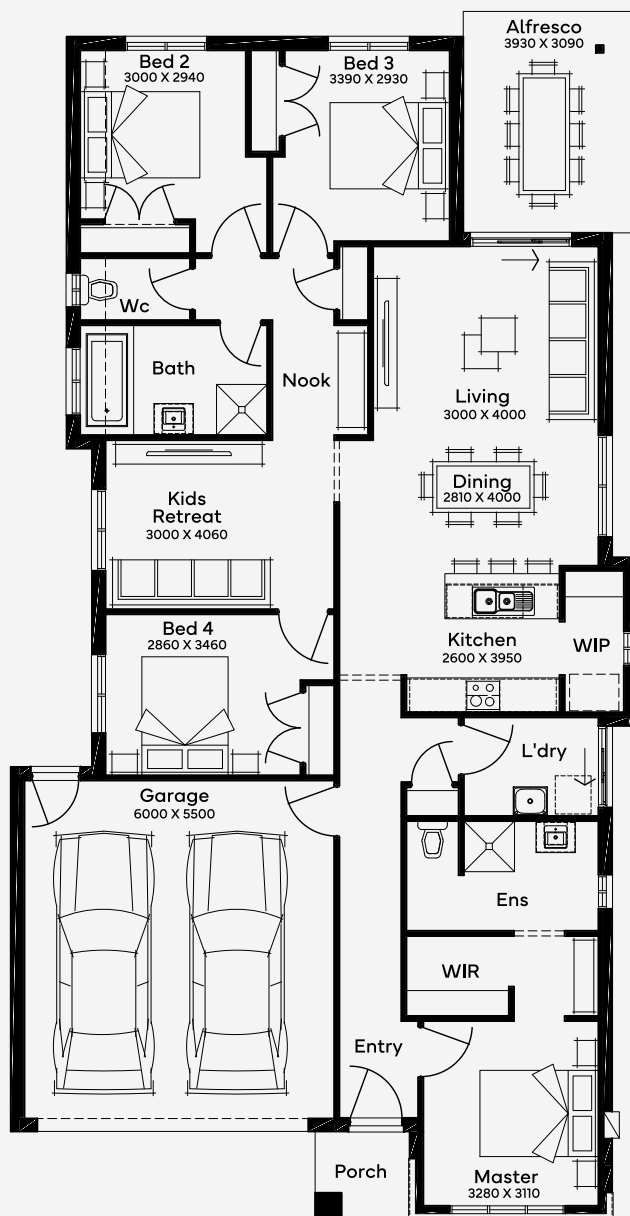
204.47 m<sup>2</sup>

Min Lot Size (WxL)

12.5m x 28m

12.5M+ LOT WIDTH

SINGLE STOREY



Please note: Some floorplan option combinations may not be possible together. Please speak to a New Home Specialist.  
Base price shown as of 24 April 2026 and is subject to change.