

Riverstone 23



ELEVATE

House Area

216.37 m²

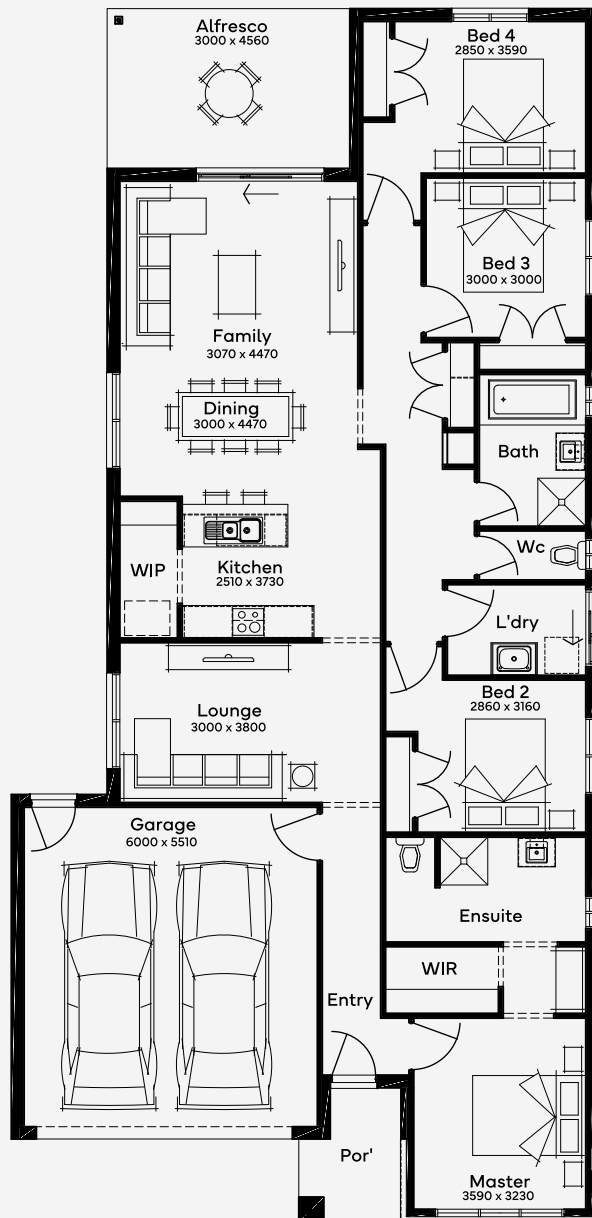
Min Lot Size (WxL)

12.5m x 30m

The Riverstone 23, designed for a 12.5m+ block, is a 4-bedroom, 2-bathroom home with a 2-car garage, perfect for families needing space and style in a compact footprint. This single-storey home is cleverly arranged with a separate wing housing three bedrooms, each with built-in storage, ideal for older children desiring their own space. The master bedroom, a serene retreat located near a formal lounge, offers quiet and privacy. Central to the home is the open-plan kitchen, complete with a walk-in pantry, flowing into the dining and family areas and extending to an alfresco area, fostering both family interaction and elegant entertaining.

12.5M+ LOT WIDTH

SINGLE STOREY



Please note: Some floorplan option combinations may not be possible together. Please speak to a New Home Specialist.
Base price shown as of 24 April 2026 and is subject to change.

