

Rankin 20



EMERGE

House Area

190.82 m²

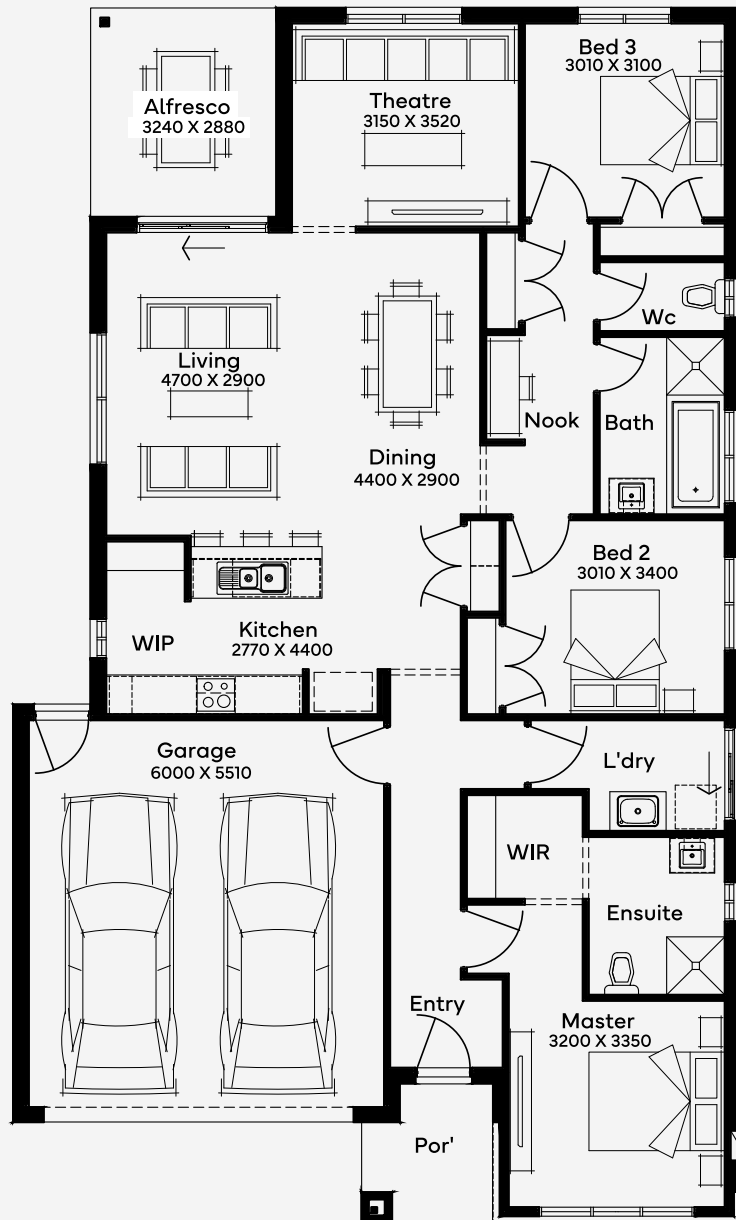
Min Lot Size (WxL)

12.5m x 28m

Discover the Rankin 20, a stunning single storey 3 bedroom, 2 bathroom 2 car garage crafted for a 12.5m+ block. The heart of the home is the expansive open plan kitchen, dining, and living area, perfect for family gatherings or entertaining. The kitchen boasts a walk-in pantry and flows effortlessly into the living and dining spaces, which connect to an inviting alfresco area ideal for indoor-outdoor living. This home also includes a theatre room, creating a cosy space for movie nights or quiet relaxation. A dedicated nook offers the perfect spot for working or studying from home. With a double-car garage, laundry, and ample storage, this home ensures practical living with a touch of luxury. Designed for families who love comfort and style, this home is the perfect blend of everyday functionality and modern living.

12.5M+ LOT WIDTH

SINGLE STOREY



Please note: Some floorplan option combinations may not be possible together. Please speak to a New Home Specialist.
Base price shown as of 24 April 2026 and is subject to change.

