

# Peron 22



EMERGE

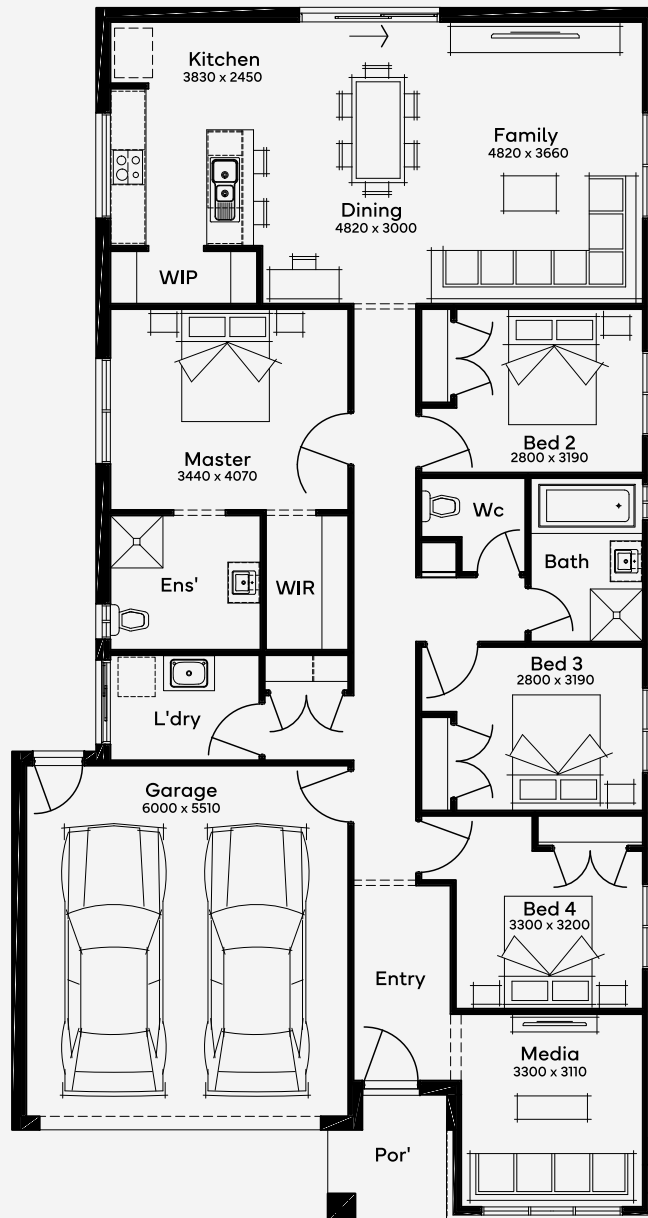
House Area

202.13 m<sup>2</sup>

Min Lot Size (WxL)

12.5m x 28m

The Peron 22, a 4-bedroom, 2-bathroom home complete with a 2-car garage, is designed for a 12.5m+ block and focuses on social living with its contemporary layout for a single-storey home. The childrens bedrooms are conveniently situated off one side of the hallway, while the master suite, with its walk-in robe and ensuite, offers privacy on the other. The heart of the home is the open-plan kitchen, living, and dining area, ideal for family gatherings and entertainment. A front media room provides additional space for relaxation or hobbies. Options like flipping the living area, adding a butler's pantry, or altering the master ensuite layout allow for customisation, ensuring the Peron 22 meets your functional and aesthetic needs



12.5M+ LOT WIDTH

SINGLE STOREY

Please note: Some floorplan option combinations may not be possible together. Please speak to a New Home Specialist.  
Base price shown as of 24 April 2026 and is subject to change.

