

Oakridge 35

 6
  3
  2

Designed for 14m+ blocks, the Oakridge 35 features 6 bedrooms, 3 bathrooms, and a 2-car garage over two floors. The lower level of the floor plan includes a designer kitchen, dining area, study nook, and living room opening to an alfresco. A guest bedroom with an ensuite and walk-in robe is a highlight, perfect for guests or multi-generational family living. Upstairs, an expansive master suite, four additional bedrooms, a children's retreat, and a shared bathroom complete this family-centric home, perfect for large or extended families.

ELEVATE

House Area

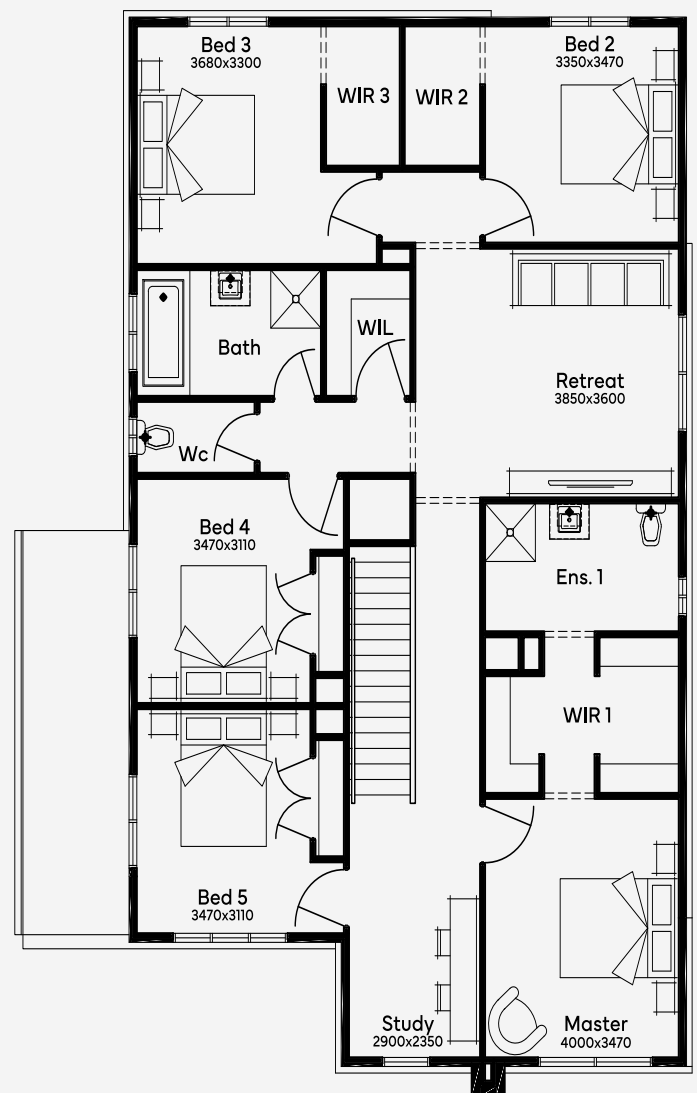
324.5 m²

Min Lot Size (WxL)

14m x 25m

14M+ LOT WIDTH

DOUBLE STOREY



Please note: Some floorplan option combinations may not be possible together. Please speak to a New Home Specialist.
Base price shown as of 24 April 2026 and is subject to change.

