

# Mundi 22



EMERGE

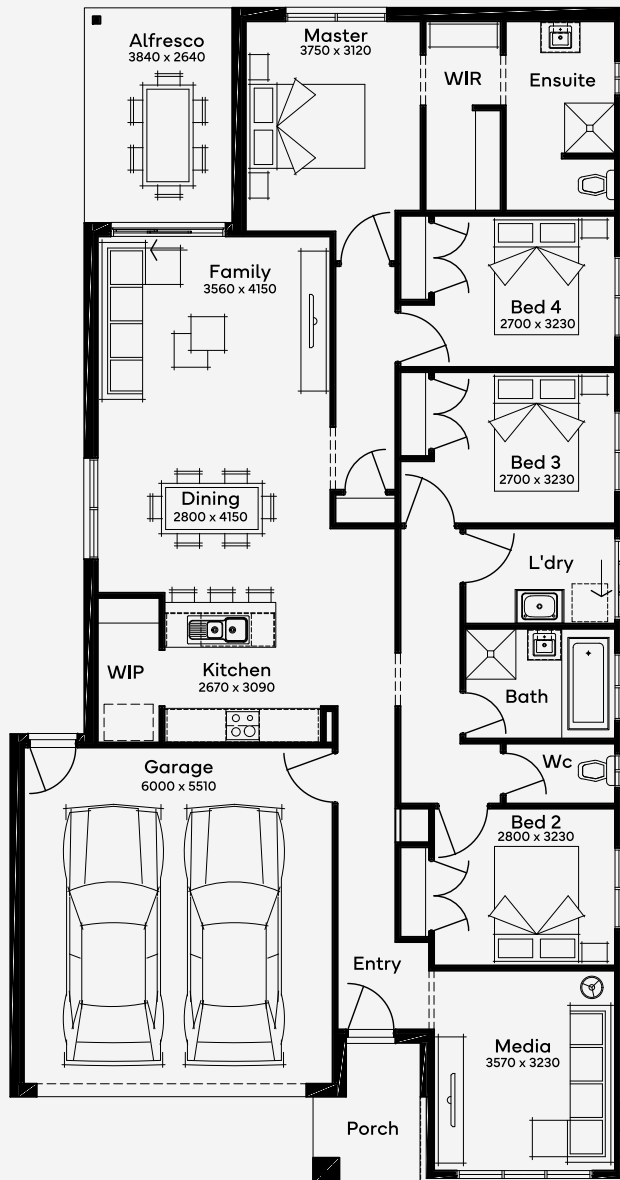
House Area

205.99 m<sup>2</sup>

Min Lot Size (WxL)

12.5m x 28m

The Mundi 22, a 4-bedroom, 2-bathroom home with a 2-car garage, is suited for a 12.5m+ block. The floor plan of this single-storey home, features a kitchen with a walk-in pantry and an open-plan living space that connects indoors to a beautiful alfresco, ideal for entertaining. A media room and three generously sized bedrooms ensure space for relaxation. The glamorous master suite, with a modern ensuite and grand walk-in robe, provides a perfect adult retreat. Making it the perfect home for upsizing as your family grows.



12.5M+ LOT WIDTH

SINGLE STOREY

Please note: Some floorplan option combinations may not be possible together. Please speak to a New Home Specialist.  
Base price shown as of 24 April 2026 and is subject to change.

