

Mills 19c

TOWNHOMES



House Area

180.55 m²

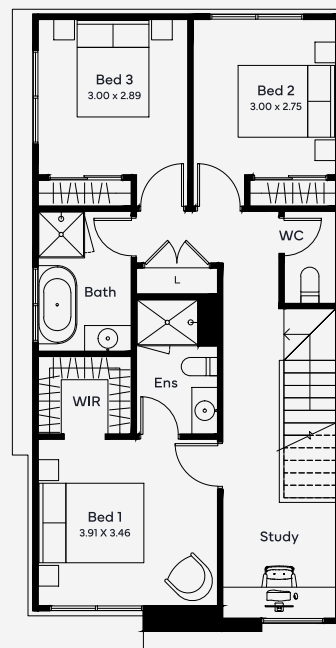
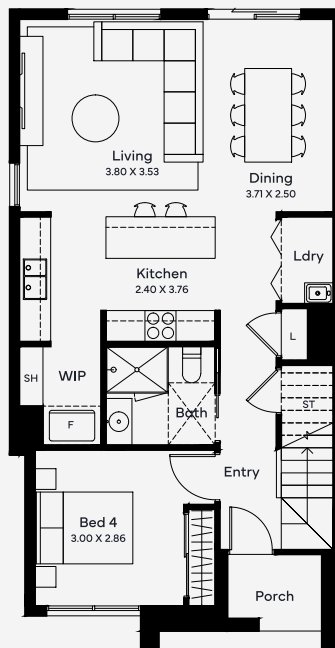
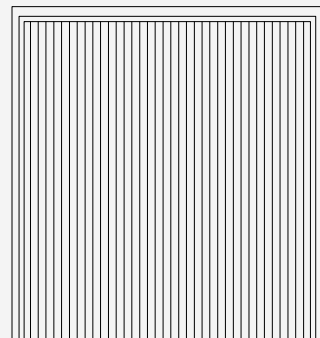
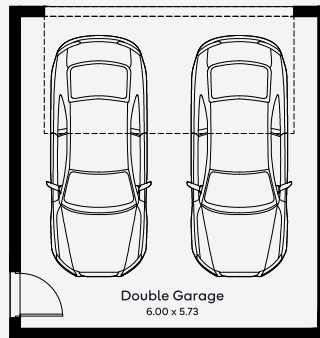
Min Lot Size (WxL)

7.75m x 25m

Discover the perfect blend of style, space, and practicality with Simonds 4-bedroom townhomes. Whether you're upsizing, downsizing, or just starting out, these homes tick every box with smart layouts and thoughtful details. Featuring master bedrooms with walk-in robes and ensuites, generous kitchens with walk-in pantries, study nooks for work or study, and modern Euro laundries, these homes deliver convenience and comfort at every turn.

7.75M+ LOT WIDTH

DOUBLE STOREY



Please note: Some floorplan option combinations may not be possible together. Please speak to a New Home Specialist.
Base price shown as of 24 April 2026 and is subject to change.

