

Marsden 34



INSPIRATIONS

House Area

322.68 m²

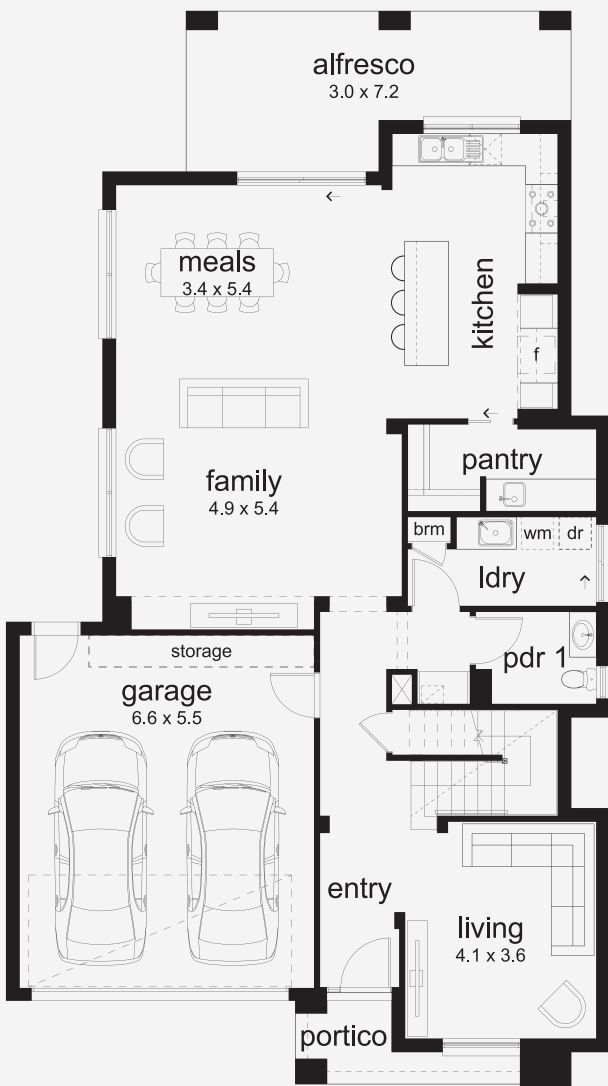
Min Lot Size (WxL)

12.5m x 28m

Smart Design, Spacious Feel The Marsden delivers double the space and modern style - without needing a wide block. Designed for lots as compact as 12.5m, this clever home feels like two in one. All four bedrooms feature walk-in robes, with a bonus lounge upstairs for extra living space. Downstairs, open-plan family areas create the perfect place to reconnect over dinner or relax after a busy day.

12.5M+ LOT WIDTH

DOUBLE STOREY



Please note: Some floorplan option combinations may not be possible together. Please speak to a New Home Specialist.
Base price shown as of 24 April 2026 and is subject to change.

