

# Leyburn 28



ELEVATE

House Area

**261.44 m<sup>2</sup>**

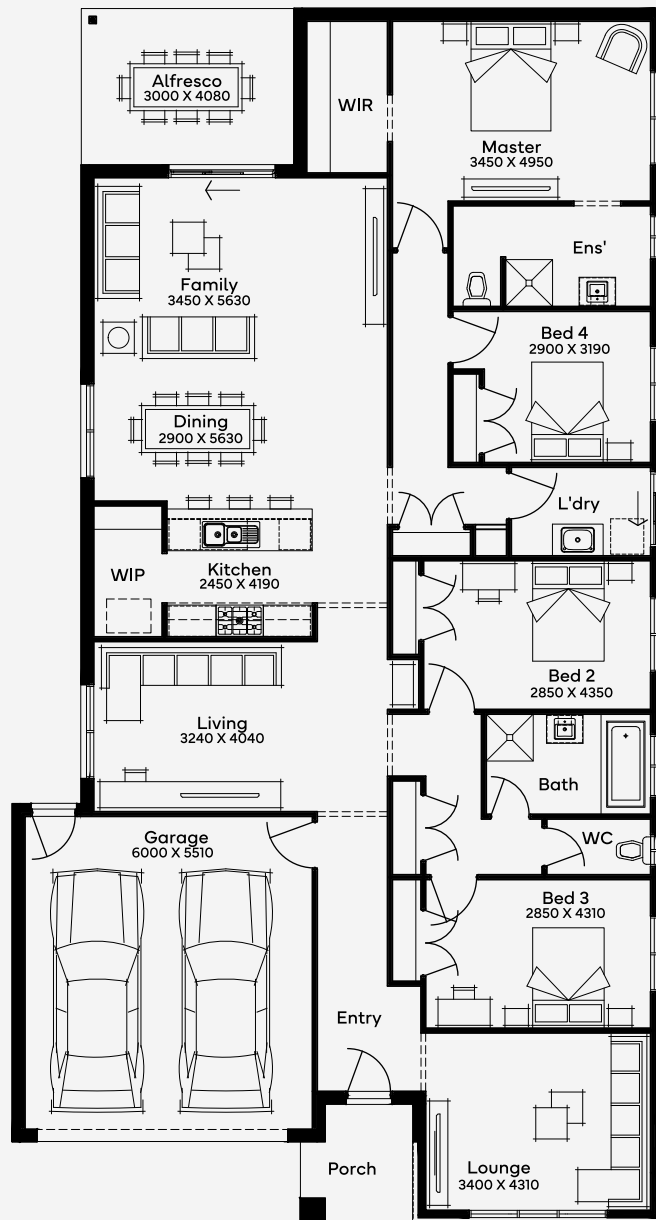
Min Lot Size (WxL)

**14m x 32m**

The Leyburn 28 home design is a single-storey marvel featuring 4 bedrooms, 2.5 bathrooms, and a 2-car garage, making it an ideal choice for families or investors. Its layout promotes a balanced lifestyle with dedicated living areas and a design catering to entertaining and privacy. Suitable for narrow lots, Leyburn 28 proves that luxury and practicality can coexist beautifully, appealing to first-home buyers and downsizers alike.

14M+ LOT WIDTH

SINGLE STOREY



Please note: Some floorplan option combinations may not be possible together. Please speak to a New Home Specialist.  
Base price shown as of 24 April 2026 and is subject to change.