

# Kiama 18



Designed for a 12.5m+ block, Kiama 18 is a 3-bedroom, 2-bathroom home with a 2-car garage, epitomising modern living at its finest. The central hallway of this single-storey home leads to a cosy living space, connecting the kitchen, dining, and lounge areas in a fluid layout. This home offers the flexibility to customise, with options like adding a butlers pantry or altering the master ensuite layout. The well-proportioned bedrooms are tucked away, providing peace and tranquility. Kiama 18 not only caters to functional living but also to those special moments of relaxation and family bonding.

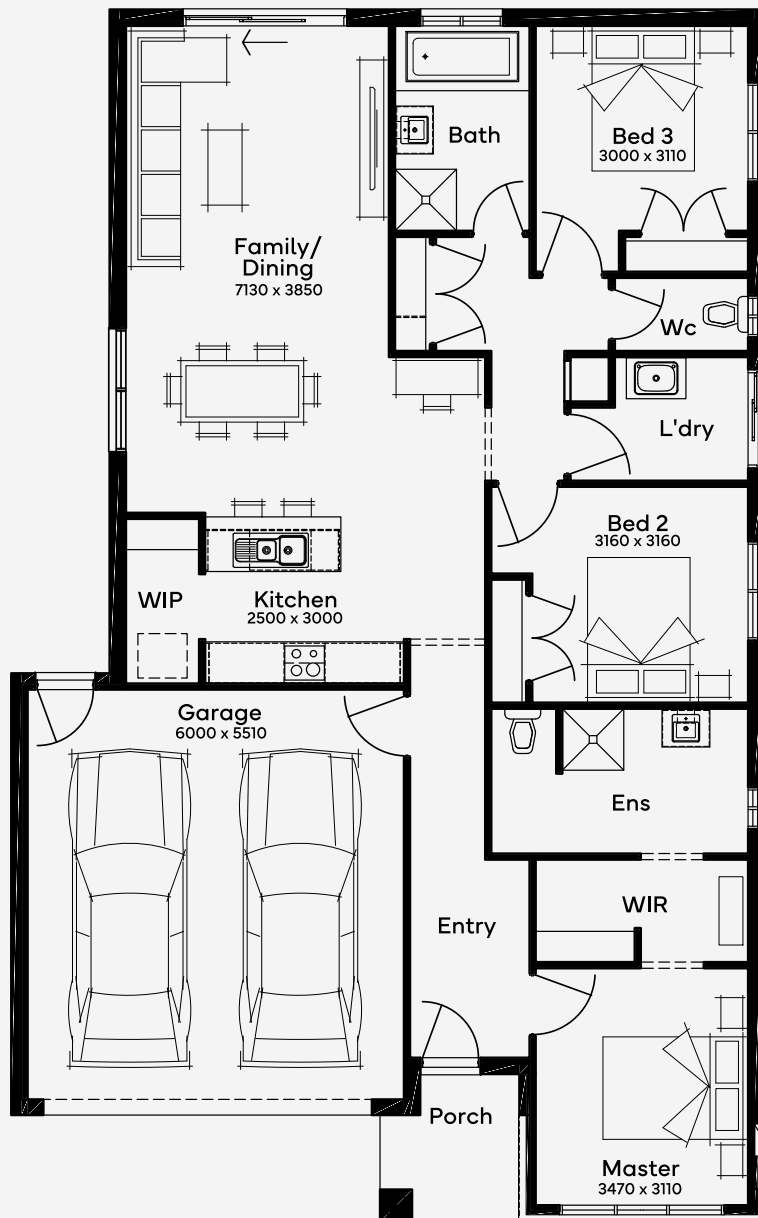
EMERGE

House Area

**173.36 m<sup>2</sup>**

Min Lot Size (WxL)

**12.5m x 25m**



12.5M+ LOT WIDTH

SINGLE STOREY

Please note: Some floorplan option combinations may not be possible together. Please speak to a New Home Specialist.  
Base price shown as of 24 April 2026 and is subject to change.

