

Kennedy 21

TOWNHOMES

 4  2.5  2

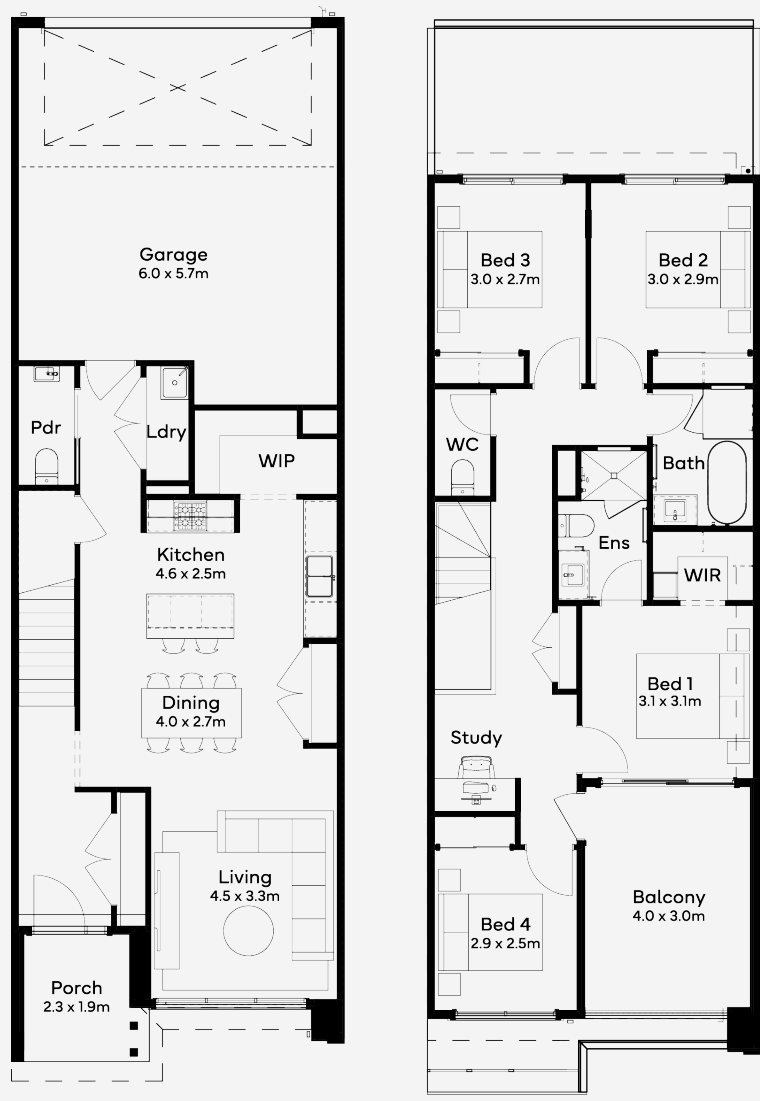
House Area

181.062 m²

Ideally positioned facing Harpley town centre with waterfront views, the Kennedy 21 from Simonds Homes is thoughtfully crafted across two generous levels. Showcasing 4 bedrooms, 2.5 bathrooms, this design delivers contemporary living with quality, turnkey finishes that focus on comfort, functionality and a low-maintenance lifestyle. At the heart of the home, a light-filled open plan kitchen with three bench spaces, two entry points and an oversized walk-in pantry, opens to large living and dining area ? creating an inviting space for everyday living and effortless entertaining. The downstairs powder room, Euro-style laundry, concealed bin storage and internal access from the garage add practical touches to the communal spaces. On the first floor, the generous master suite is a true retreat, featuring a walk-in robe, ensuite and access to a beautiful north-facing balcony overlooking Harpley?s picturesque lake

6M+ LOT WIDTH

DOUBLE STOREY



Please note: Some floorplan option combinations may not be possible together. Please speak to a New Home Specialist.
Base price shown as of 23 June 2026 and is subject to change.

