

# Hynes 30

5 3 2

ELITE

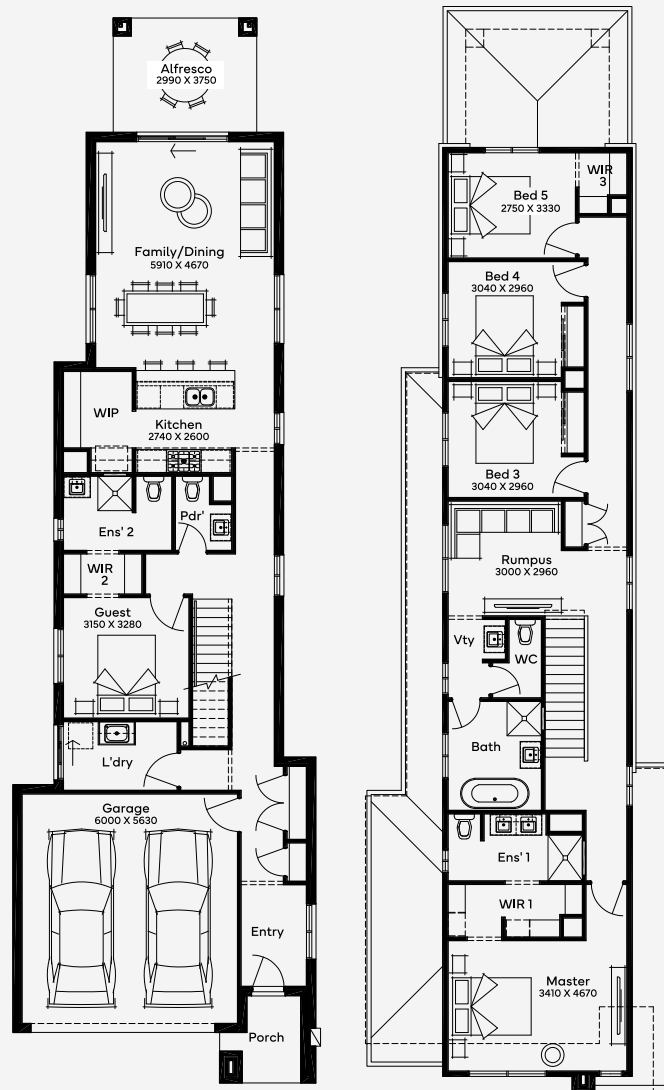
House Area

280.86 m<sup>2</sup>

Designed for 9m+ blocks, the double-storey Hynes 30 home design reimagines comfortable living for compact frontages. As you move through the hallway, you'll be met with a convenient downstairs guest suite and powder room, before moving through to the open plan kitchen, dining, living and alfresco. Upstairs, you'll find 3 secondary bedrooms to one side of the landing, equipped with a rumpus and central bathroom and WC. Overlooking the street, the master bedroom provides the adults with comfort and privacy, featuring a walk-in robe and ensuite with a double vanity. Practical touches are not forgotten, with a separate laundry, 2-car garage and ample storage adding the finishing touches to an exceptional floor plan.

9M+ LOT WIDTH

DOUBLE STOREY



Please note: Some floorplan option combinations may not be possible together. Please speak to a New Home Specialist.  
Base price shown as of 24 April 2026 and is subject to change.