

# Hosking 16

3 2 1

Welcome to the Hosking 16, single-storey living in this stylish 3 bedroom, 2 bathroom, 1 car garage home, perfect for a 10m+ block. Thoughtfully designed with modern families in mind, this home features an open-plan kitchen with a flow that goes seamlessly into the family and dining areas, creating the perfect space for entertaining. The master suite, complete with a walk-in robe and ensuite, offers a private retreat, while the additional bedrooms provide ample space for family or guests. A single car garage and practical layout make this home ideal for easy, low-maintenance living without compromising on comfort or style.

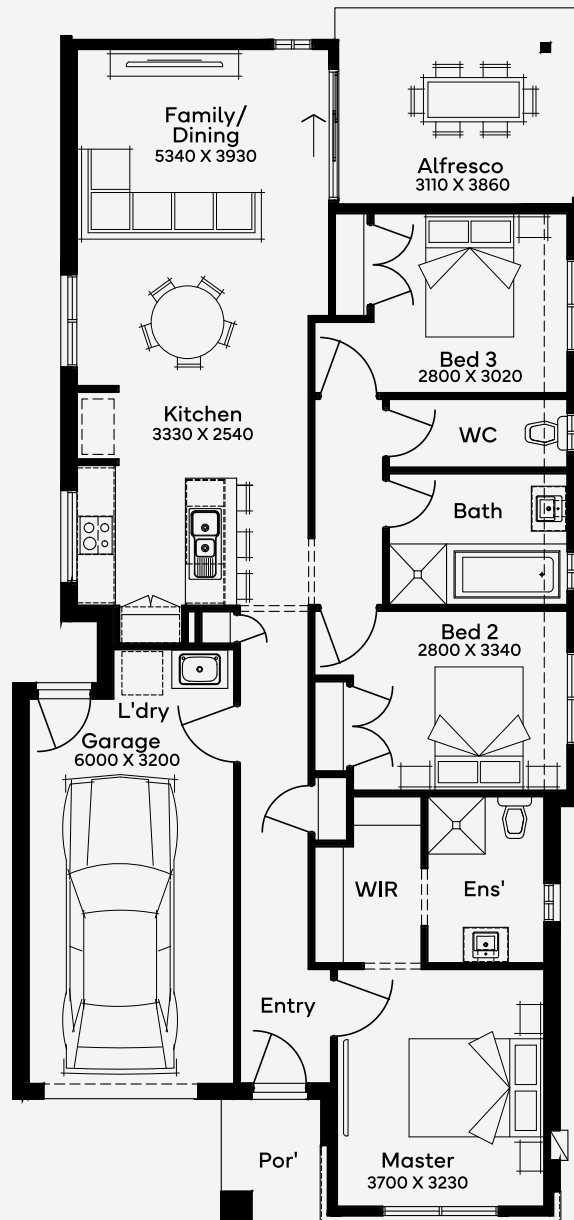
EMERGE

House Area

148.39 m<sup>2</sup>

Min Lot Size (WxL)

10m x 25m



10M+ LOT WIDTH

SINGLE STOREY

Please note: Some floorplan option combinations may not be possible together. Please speak to a New Home Specialist.  
Base price shown as of 25 April 2026 and is subject to change.

**SIMONDS**  
How Australia Homes