

Hillston 30

 5
  2
  2

ELEVATE

House Area

279.66 m²

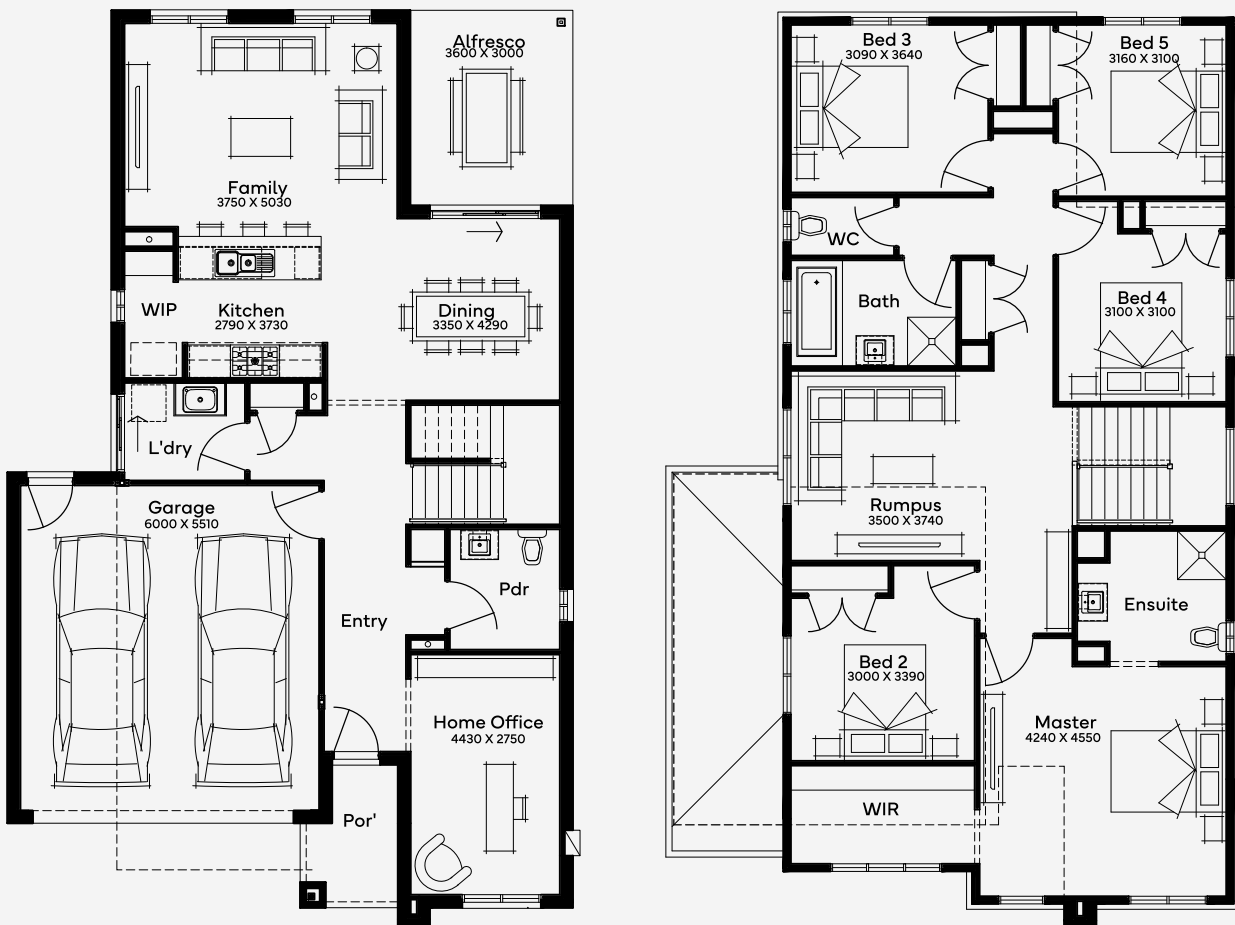
Min Lot Size (WxL)

12.5m x 25m

Designed for 12.5m+ blocks, the Hillston 30 is a double-storey 5-bedroom, 3-bathroom home with 3 living spaces, ideal for large families. The ground floor includes shared living spaces, a sitting room, and a large open-plan kitchen leading to an alfresco. The upstairs houses a luxurious master suite, four secondary bedrooms, a shared bathroom, and a rumpus room, offering ample space for all family members and providing a functional and luxurious living experience.

12.5M+ LOT WIDTH

DOUBLE STOREY



Please note: Some floorplan option combinations may not be possible together. Please speak to a New Home Specialist.
Base price shown as of 24 April 2026 and is subject to change.

