

Hervey 23



ELEVATE

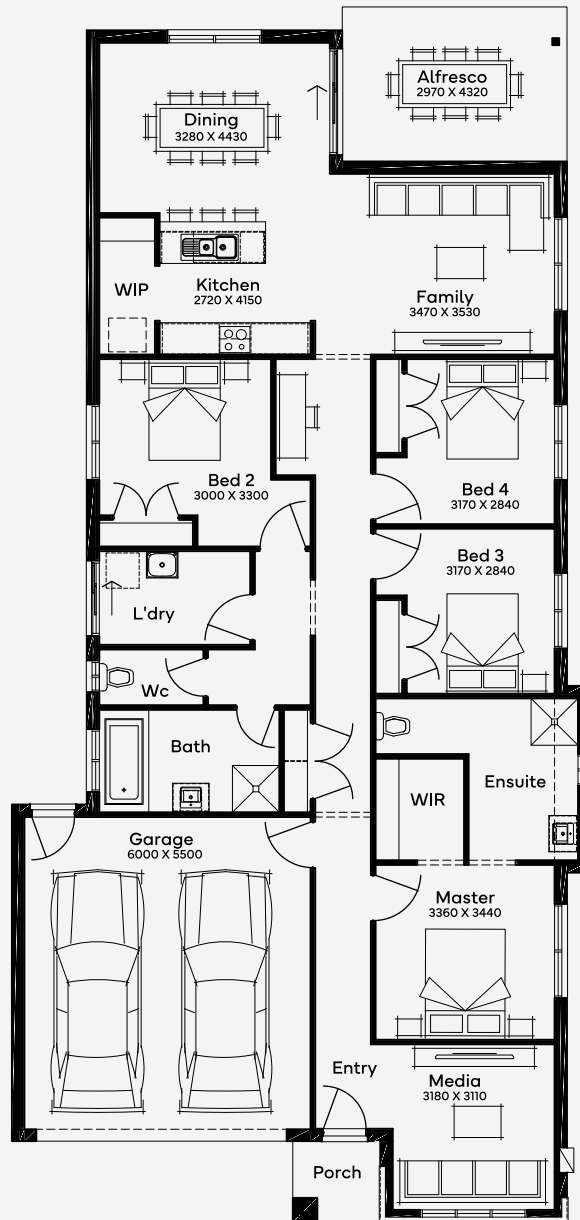
House Area

218.15 m²

Min Lot Size (WxL)

12.5m x 30m

The Hervey 23, perfect for 12.5m+ blocks, is a 4-bedroom, 2-bathroom single-storey home with 2 living spaces, embodying modern living with functional design. Ideal for families seeking a blend of comfort and style, the floor plan offers a layout that balances private and communal areas. Bedrooms provide peaceful retreats, while the living spaces are crafted for family interaction and relaxation. This home is a testament to contemporary living, ensuring each area is utilised for maximum comfort and efficiency.



12.5M+ LOT WIDTH

SINGLE STOREY

Please note: Some floorplan option combinations may not be possible together. Please speak to a New Home Specialist.
Base price shown as of 24 April 2026 and is subject to change.

