

Granite 22



EMERGE

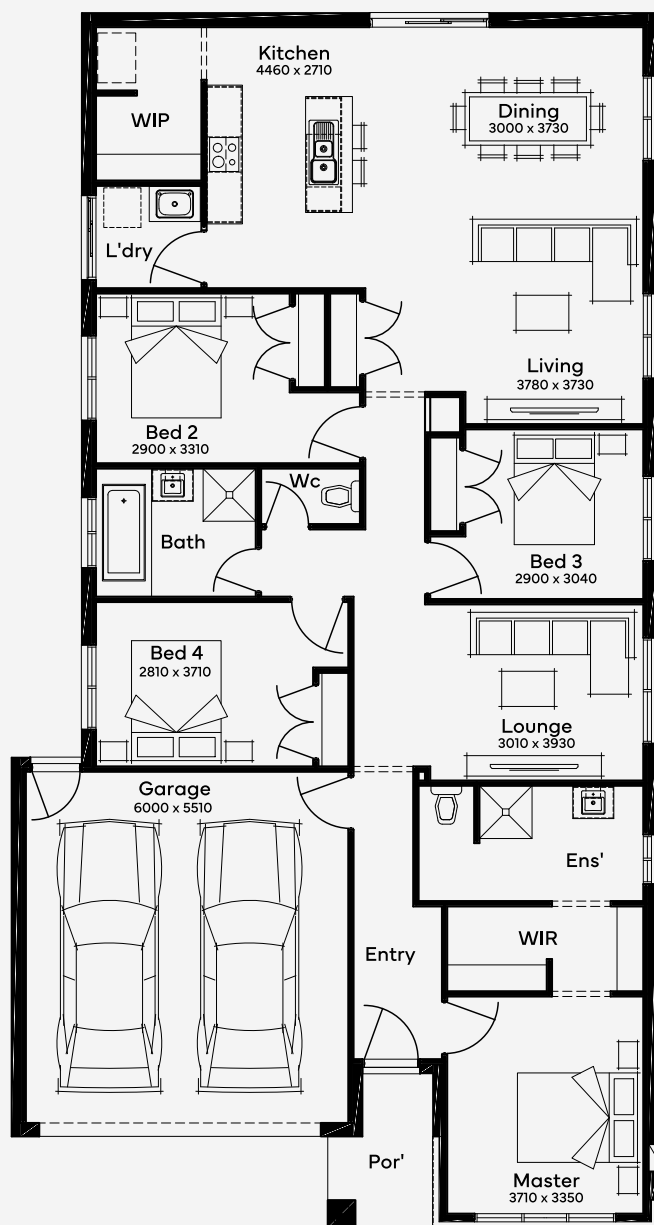
House Area

205.18 m²

Min Lot Size (WxL)

12.5m x 28m

The Granite 22, a 4-bedroom, 2-bathroom home with 2 living spaces, is single-storey, designed for a 12.5m+ block, catering to the dynamics of a busy family. It features a large kitchen with a diner-style brunch bar and a hidden butler's pantry, overlooking a spacious dining and living area with a welcoming atmosphere. The home's layout includes three centrally located bedrooms for children, while the master suite is a secluded sanctuary strategically placed behind the lounge at the entrance. This design epitomises modern living with spaces that adapt to both lively family interactions and tranquil moments.



12.5M+ LOT WIDTH

SINGLE STOREY

Please note: Some floorplan option combinations may not be possible together. Please speak to a New Home Specialist.
Base price shown as of 24 April 2026 and is subject to change.