

Gardiner 20

3 2 2

Embrace the Gardiner 20, this elegantly designed single storey, 3 bedroom, 2 bathroom, 2 car garage home that balances sophistication with everyday comfort. Crafted for a 12m+ block the open-plan layout brings together the kitchen, dining, and living areas, create a spacious hub perfect for family gatherings or entertaining. The gourmet kitchen features a large island bench and a walk-in pantry, offering both style and practicality for the home chef. The master suite is a true haven, complete with a walk-in robe and a private ensuite, giving you a peaceful retreat. Two additional well-proportioned bedrooms share easy access to the main bathroom and separate water closet, offering convenience for family or guests.

EMERGE

House Area

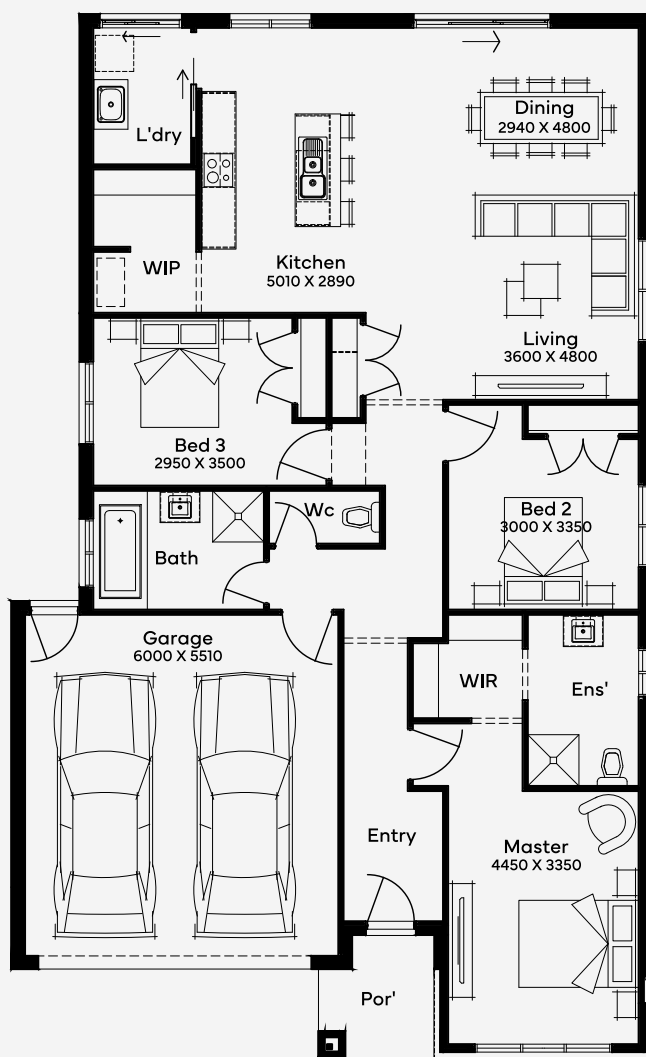
186 m²

Min Lot Size (WxL)

12.5m x 28m

12.5M+ LOT WIDTH

SINGLE STOREY



Please note: Some floorplan option combinations may not be possible together. Please speak to a New Home Specialist.
Base price shown as of 24 April 2026 and is subject to change.

SIMONDS
How Australia Homes