

Finch 20



EMERGE

House Area

190.52 m²

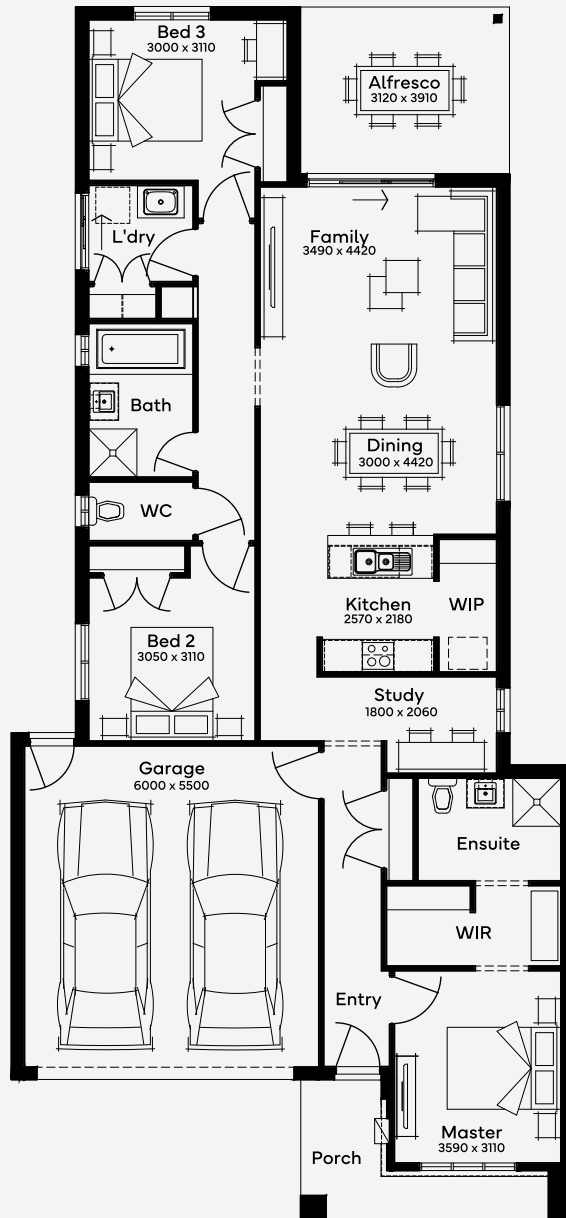
Min Lot Size (WxL)

10.5m x 28m

The Finch 20, a 3-bedroom, 2-bathroom home with a 2-car garage, is designed for a 10.5m+ block and is the pinnacle of contemporary living. The heart of this single-storey home is its open-plan kitchen, dining, and family area, opening to a private alfresco for a seamless indoor-outdoor experience. Unique within the Finch collection, it features a separate study. Options such as a rear flip, a butler's pantry, or a multi-purpose room allow you to tailor the space to your needs. The master suite at the front offers a peaceful retreat, complete with a walk-in robe and ensuite, while a dedicated children's wing comprises two additional bedrooms, a central bathroom, a laundry, and a WC.

10.5M+ LOT WIDTH

SINGLE STOREY



Please note: Some floorplan option combinations may not be possible together. Please speak to a New Home Specialist.
Base price shown as of 24 April 2026 and is subject to change.

