

Finch 18



EMERGE

House Area

169.24 m²

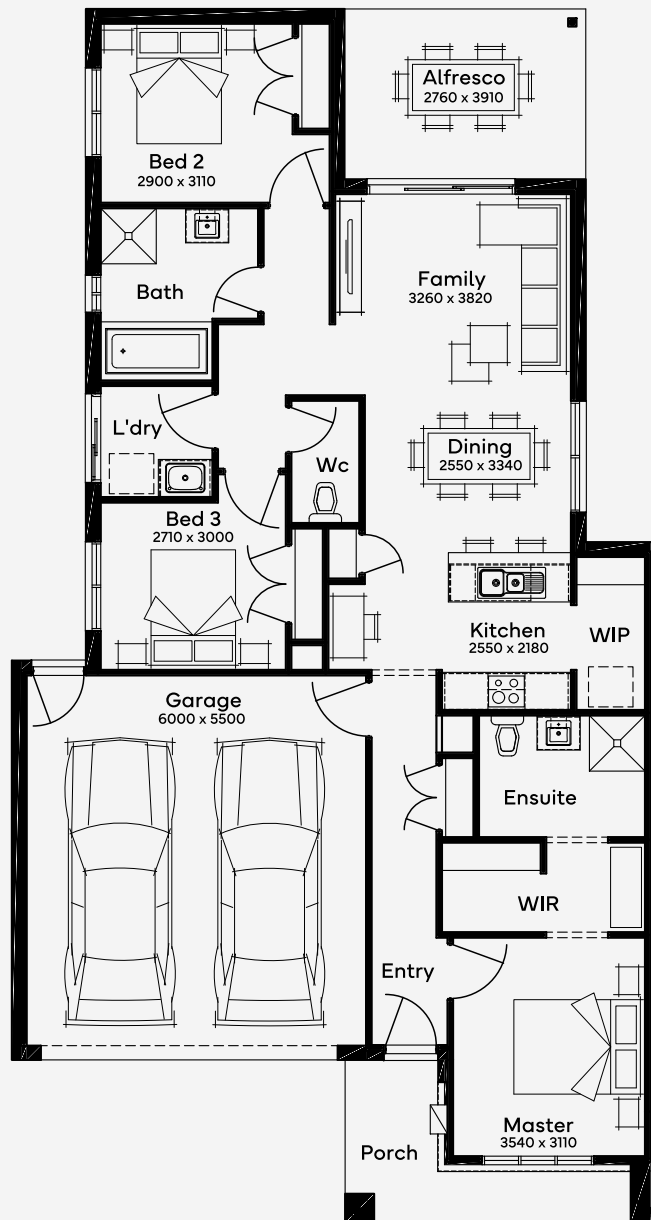
Min Lot Size (WxL)

10.5m x 25m

The Finch 18, a delightful 3-bedroom, 2-bathroom home with a 2-car garage, is perfectly suited for a 10.5m+ block, offering a blend of contemporary living and functional design. The heart of this single-storey home is its open-plan layout, merging kitchen, living, and dining areas that extend seamlessly to an alfresco, inviting natural light. This design provides flexibility with optional structural changes like an additional bedroom or a home office. The master bedroom, positioned at the front, offers a private sanctuary, while the rear bedrooms ensure separation and privacy.

10.5M+ LOT WIDTH

SINGLE STOREY



Please note: Some floorplan option combinations may not be possible together. Please speak to a New Home Specialist.
Base price shown as of 24 April 2026 and is subject to change.

