

Danella 18

3 2 2

EMERGE

House Area

165.14 m²

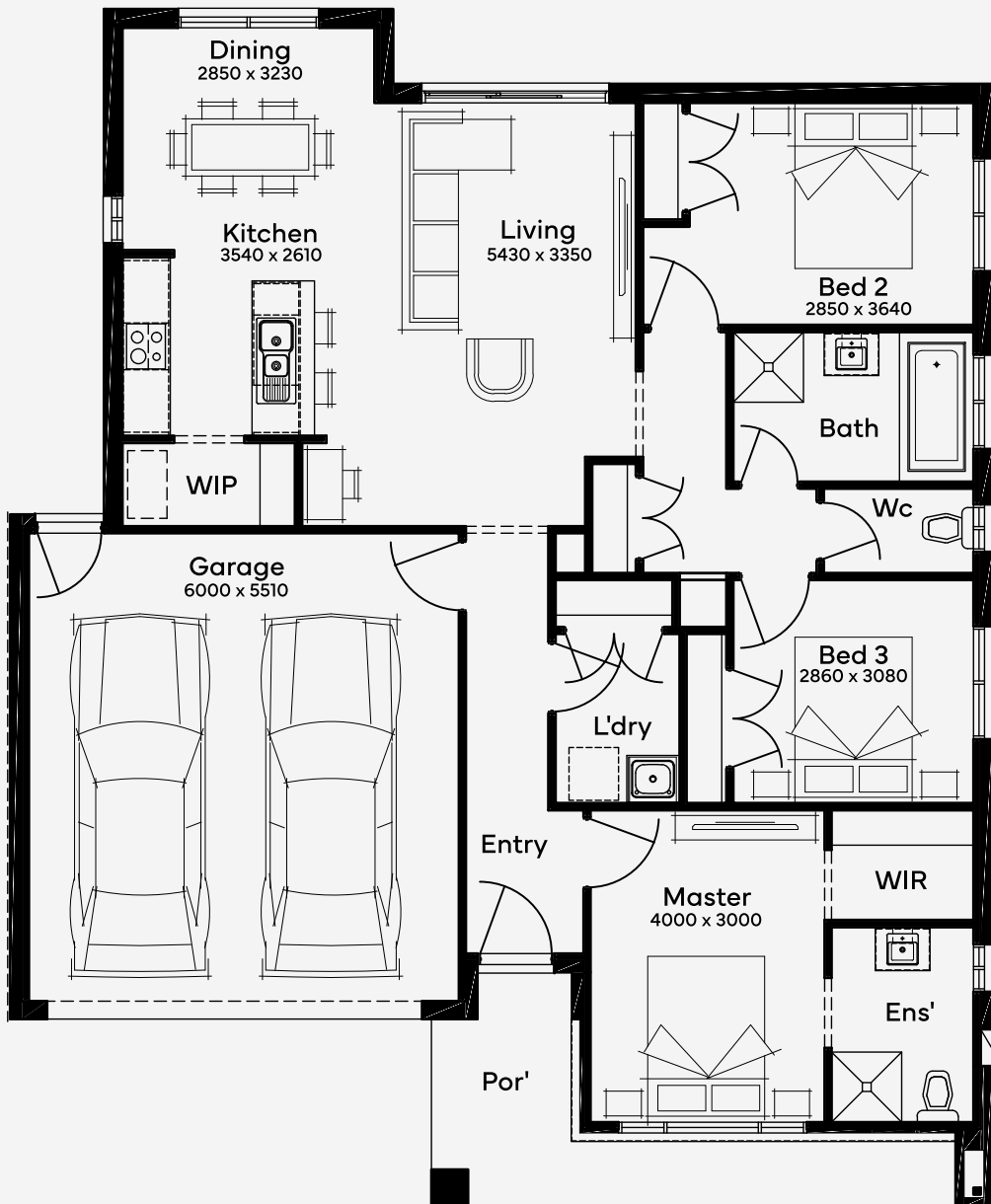
Min Lot Size (WxL)

14m x 21m

The Danella 18, ideal for a 14m+ block, is a 3-bedroom, 2-bathroom home featuring a 2-car garage and a unified living space that exudes modernity. This single-storey design cleverly integrates hidden pockets of privacy with a spacious living area that opens to the outdoors, ensuring a balance of light and functionality. The large outdoor connection illuminates the interior, creating a vibrant atmosphere perfect for family activities or entertaining guests. Danella 18 is not just a house; it's a thoughtfully designed sanctuary where every family moment becomes a cherished memory.

14M+ LOT WIDTH

SINGLE STOREY



Please note: Some floorplan option combinations may not be possible together. Please speak to a New Home Specialist.
Base price shown as of 25 April 2026 and is subject to change.

