

Dalwood 25



ELEVATE

House Area

238.14 m²

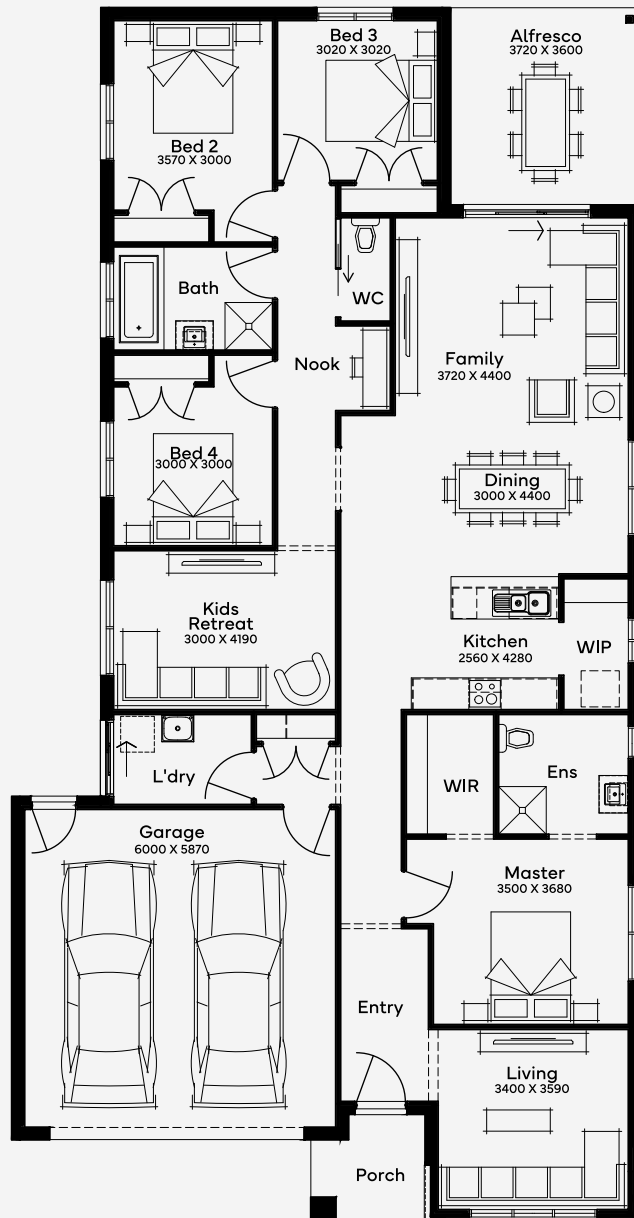
Min Lot Size (WxL)

14m x 30m

With 4 bedrooms and 2 bathrooms, the Dalwood 25 is perfect for block widths 14m+, offering a serene retreat for families. The floor plan features a captivating layout that includes a spacious front living room, a secluded children's retreat, and a generous open-plan family area, ensuring ample space for both communal gatherings and moments of privacy. This home is meticulously designed to accommodate various lifestyles, providing a haven of comfort and style with 3 living spaces and a 2-car garage, making it the perfect backdrop for everyday living and entertaining.

14M+ LOT WIDTH

SINGLE STOREY



Please note: Some floorplan option combinations may not be possible together. Please speak to a New Home Specialist.
Base price shown as of 24 April 2026 and is subject to change.

