

Chisholm 41

 5
  3
  2

Designed for 15m+ blocks, the Chisholm 41 offers a 5-bedroom, 3-bathroom floor plan and a 2-car garage. This double-storey house design is the epitome of space and comfort, featuring a ground floor with a guest bedroom, powder room, an additional lounge, and an open-concept kitchen with a striking walk-in pantry. The upper level houses a luxurious master bedroom, providing a serene retreat for parents, alongside well-designed bedrooms for family members. The Chisholm 41 perfectly balances communal family living with personal relaxation spaces.

ELEVATE

House Area

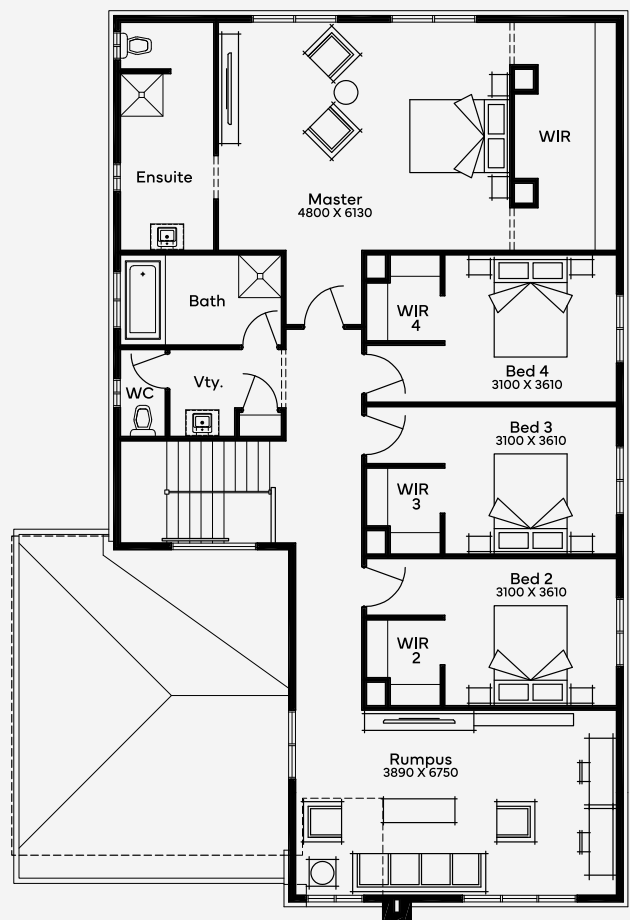
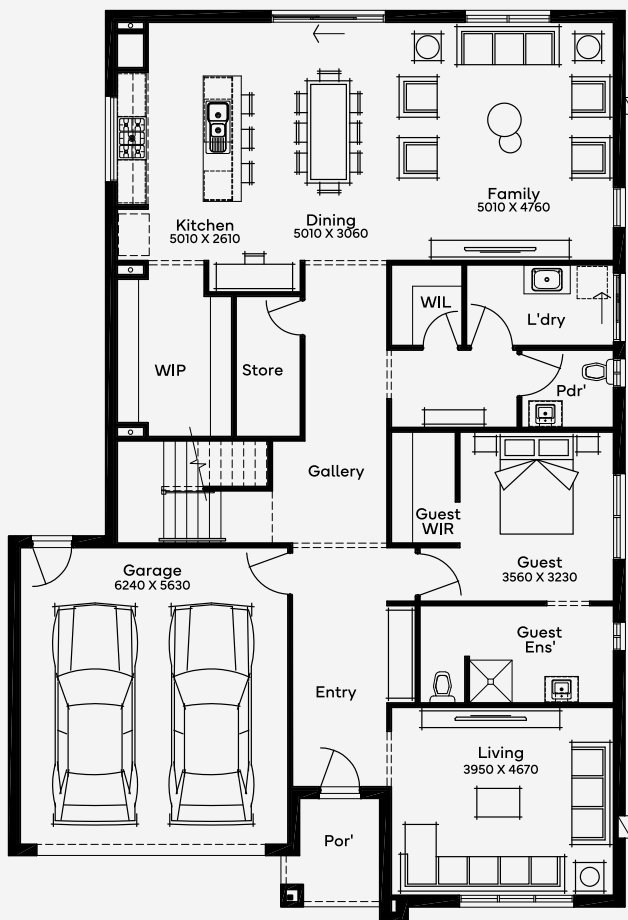
385.03 m²

Min Lot Size (WxL)

15m x 30m

15M+ LOT WIDTH

DOUBLE STOREY



Please note: Some floorplan option combinations may not be possible together. Please speak to a New Home Specialist.
Base price shown as of 24 April 2026 and is subject to change.

