

Charlton 32



Space to Live, Room to Grow The Charlton is designed with families in mind, offering a spacious layout that brings people together while still allowing room to unwind. With open-plan living at its heart, plus dedicated breakout areas, there's a place for every mood and moment. The master suite delivers privacy and comfort, and the alfresco invites easy indoor-outdoor living all year round.

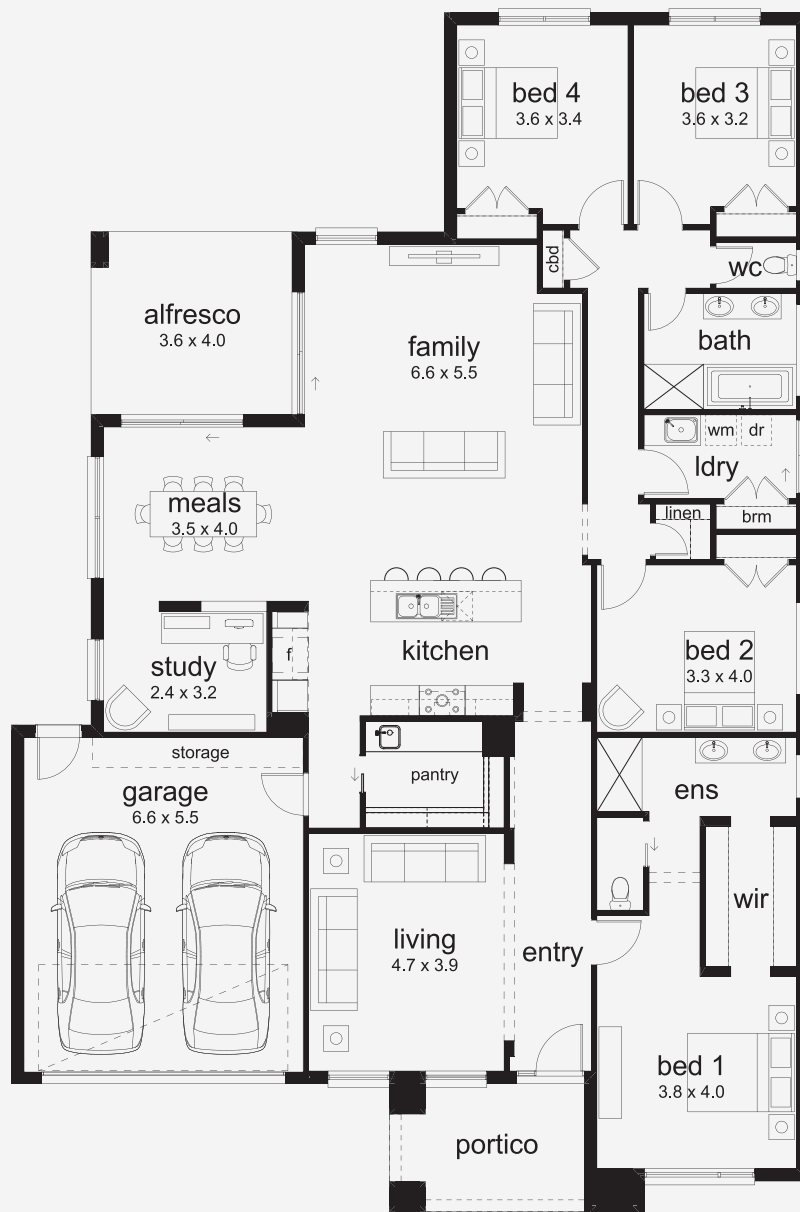
INSPIRATIONS

House Area

298.78 m²

Min Lot Size (WxL)

17m x 32m



17M+ LOT WIDTH

SINGLE STOREY

Please note: Some floorplan option combinations may not be possible together. Please speak to a New Home Specialist.
Base price shown as of 24 April 2026 and is subject to change.

