

# Charlton 30

4 2 2

A Home That Keeps Up With You The Charlton brings smart design and everyday comfort together. Enjoy the spacious open-plan hub for cooking, dining and relaxing, with additional living spaces that give everyone room to breathe. The master suite is a peaceful escape, while the alfresco is perfect for entertaining, no matter the occasion. It's a home that grows and moves with you.

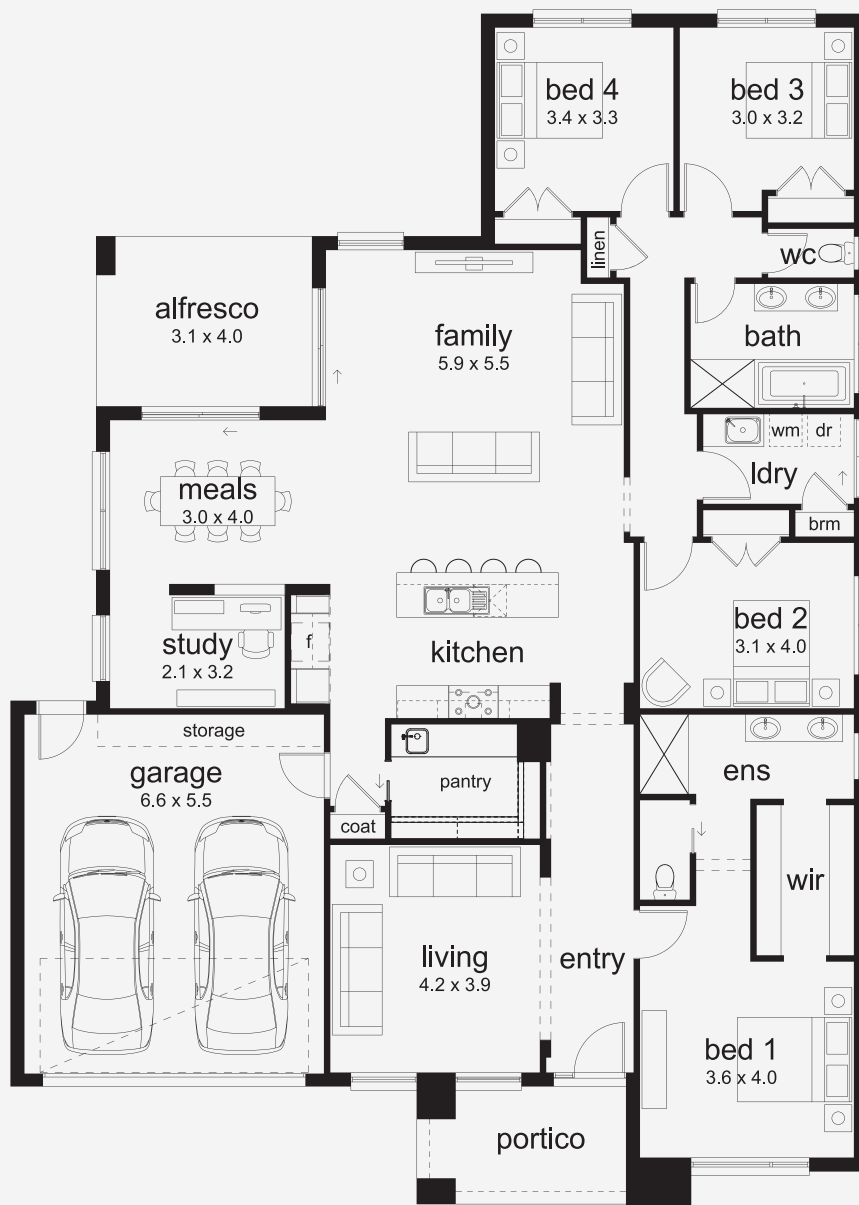
## INSPIRATIONS

House Area

**276.7 m<sup>2</sup>**

Min Lot Size (WxL)

**17m x 30m**



17M+ LOT WIDTH

SINGLE STOREY

Please note: Some floorplan option combinations may not be possible together. Please speak to a New Home Specialist.  
Base price shown as of 25 April 2026 and is subject to change.

**SIMONDS**  
How Australia Homes