

# Charlton 28

 3
  2
  2

More Room, More Possibilities The Charlton is all about space, flow and freedom. Its thoughtful layout blends open-plan living with separate breakout zones, giving everyone a place to relax, connect or recharge. The master suite offers a peaceful retreat with its own ensuite, while the alfresco sets the stage for easy outdoor entertaining. From quiet coffee mornings to energetic afternoons, this home adapts to whatever the day brings.

## INSPIRATIONS

House Area

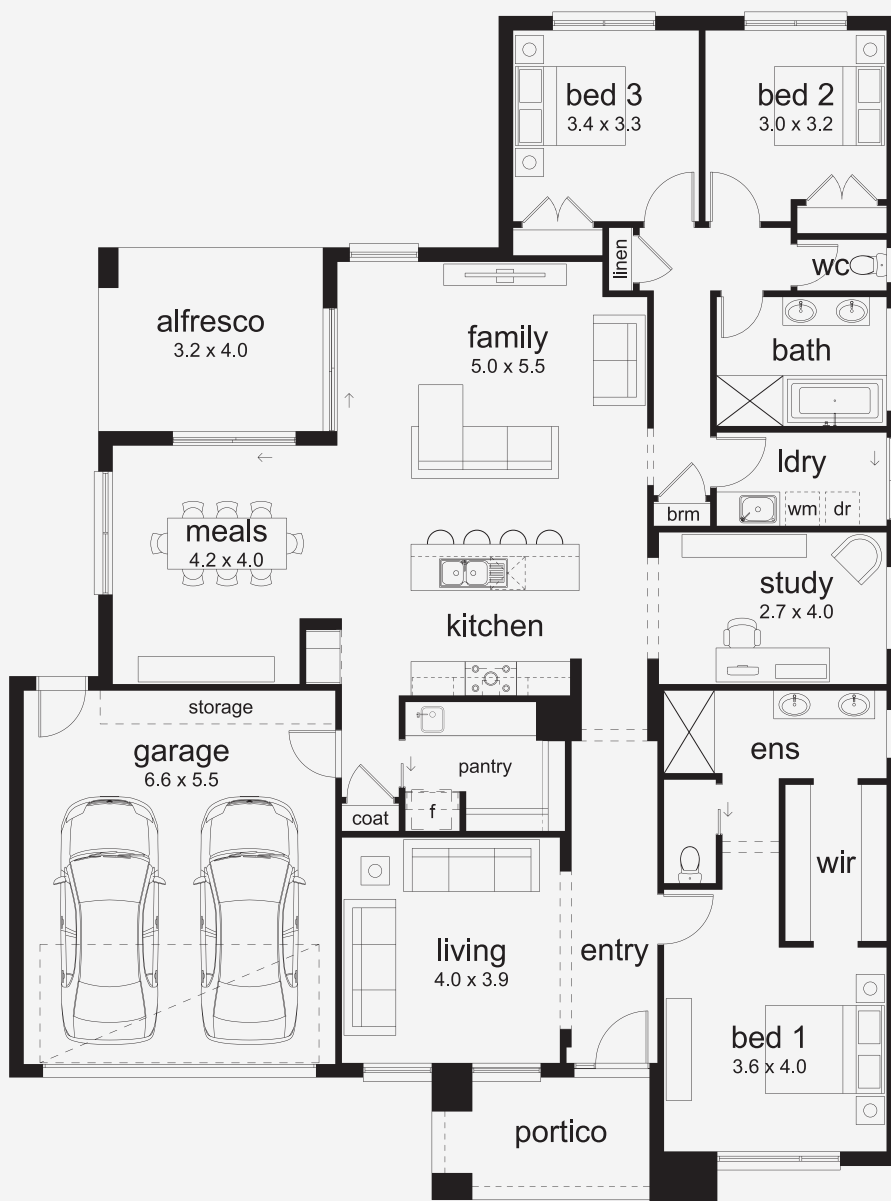
**263.11 m<sup>2</sup>**

Min Lot Size (WxL)

**17m x 28m**

17M+ LOT WIDTH

SINGLE STOREY



Please note: Some floorplan option combinations may not be possible together. Please speak to a New Home Specialist.  
Base price shown as of 24 April 2026 and is subject to change.

