

# Calvert 21



ELEVATE

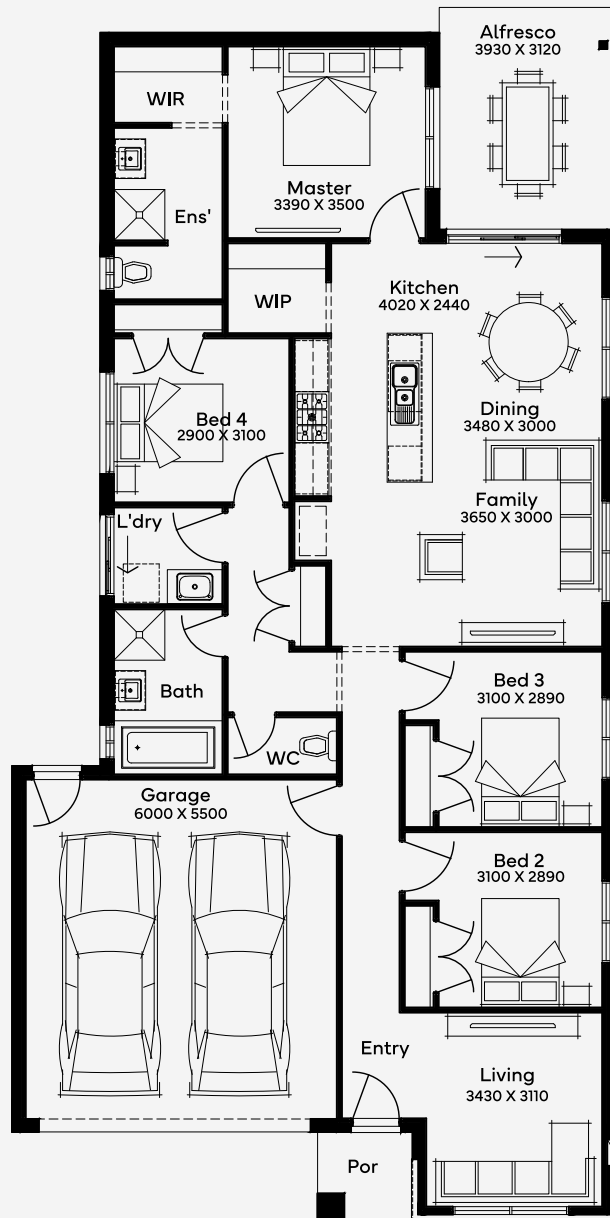
House Area

196.73 m<sup>2</sup>

The Calvert 21 is a modern family home design that perfectly balances style, comfort, and functionality. Designed with growing families in mind, it features four generously sized bedrooms, including a spacious master suite with walk-in robe and private ensuite. The open-plan kitchen, living, and dining areas create a welcoming hub for daily life and entertaining. A separate lounge room offers flexibility as a media room or quiet retreat, while thoughtful design elements like internal access from the double garage and plenty of storage add everyday convenience. The single-storey Calvert 21 is suited to 12.5m+ wide blocks and delivers intelligently zoned living for modern families. Whether you're upsizing or building your first family home, the Calvert 21 delivers comfort, space, and contemporary living in one beautifully designed home design.

12.5M+ LOT WIDTH

SINGLE STOREY



Please note: Some floorplan option combinations may not be possible together. Please speak to a New Home Specialist.  
Base price shown as of 24 April 2026 and is subject to change.

