

Boyd 25



ELEVATE

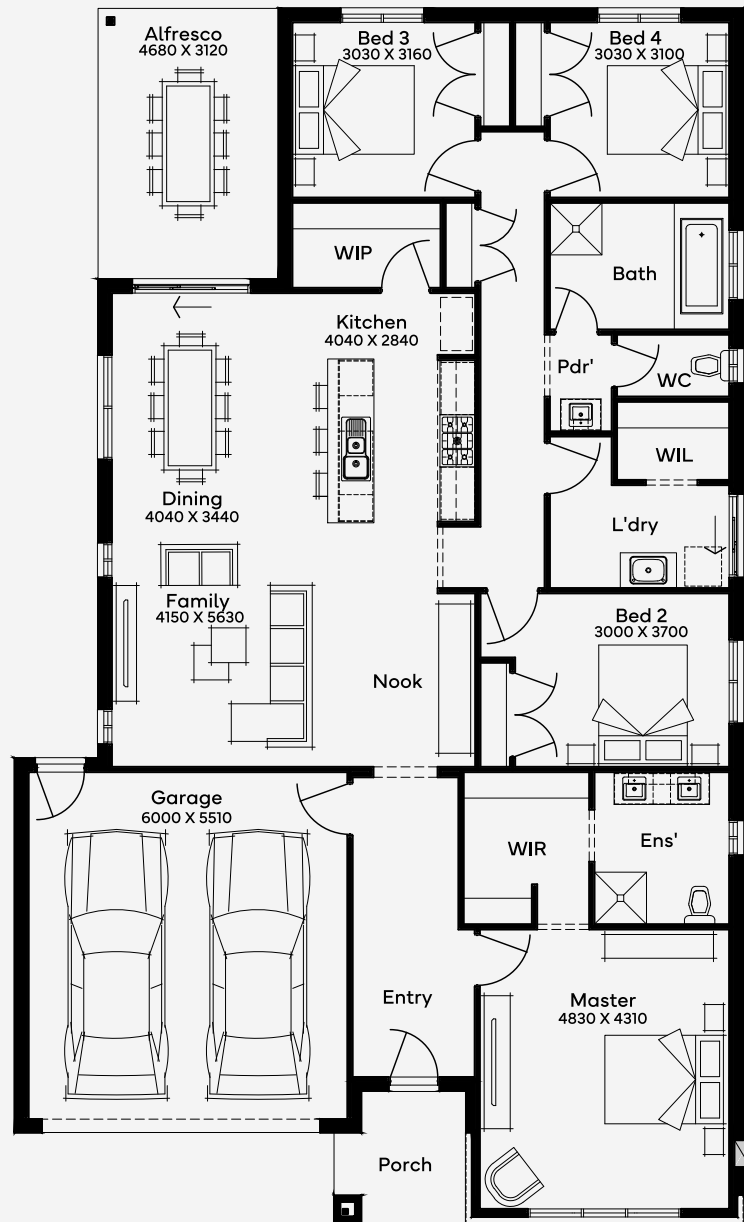
House Area

236.99 m²

Min Lot Size (WxL)

14m x 30m

Designed for a 14m+ block, the Boyd 25 integrates 4 bedrooms and 2 bathrooms with a 2-car garage in its clever layout. This single-storey home design showcases functional elegance, featuring a spacious combined area for family activities and meals and a well-equipped kitchen. The master bedroom, complete with a walk-in robe and an ensuite, provides a private sanctuary. Three additional bedrooms, conveniently located off the kitchen, ensure easy access to family spaces, making this floor plan an excellent choice for families valuing both style and practicality.



14M+ LOT WIDTH

SINGLE STOREY

Please note: Some floorplan option combinations may not be possible together. Please speak to a New Home Specialist.
Base price shown as of 24 April 2026 and is subject to change.

SIMONDS
How Australia Homes