

Barclay 19



Designed for a 9m+ block, the Bronson 19 offers 4 beautiful bedrooms, 2 bathrooms and 1 car garage. This layout is ideal for families of all sizes with an open plan kitchen, dining and living area seamlessly connect to an alfresco space, creating the perfect spot for entertaining or relaxing outdoors. Families love the kids retreat, offering a dedicated space for play or study. Whether you're enjoying family in the open living areas or retreating to one of the four generous bedrooms, this home design promises to enhance every aspect of modern family life.

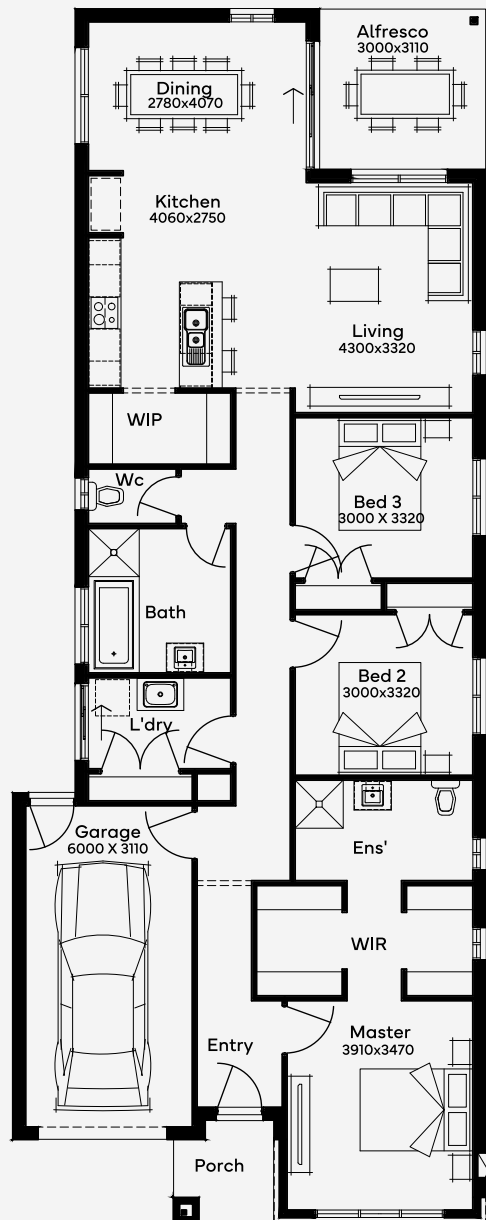
EMERGE

House Area

178.36 m²

Min Lot Size (WxL)

10m x 30m



Please note: Some floorplan option combinations may not be possible together. Please speak to a New Home Specialist.
Base price shown as of 23 June 2026 and is subject to change.