

Balmoral 50

 5
  5
  2

INSPIRATIONS

House Area

464.45 m²

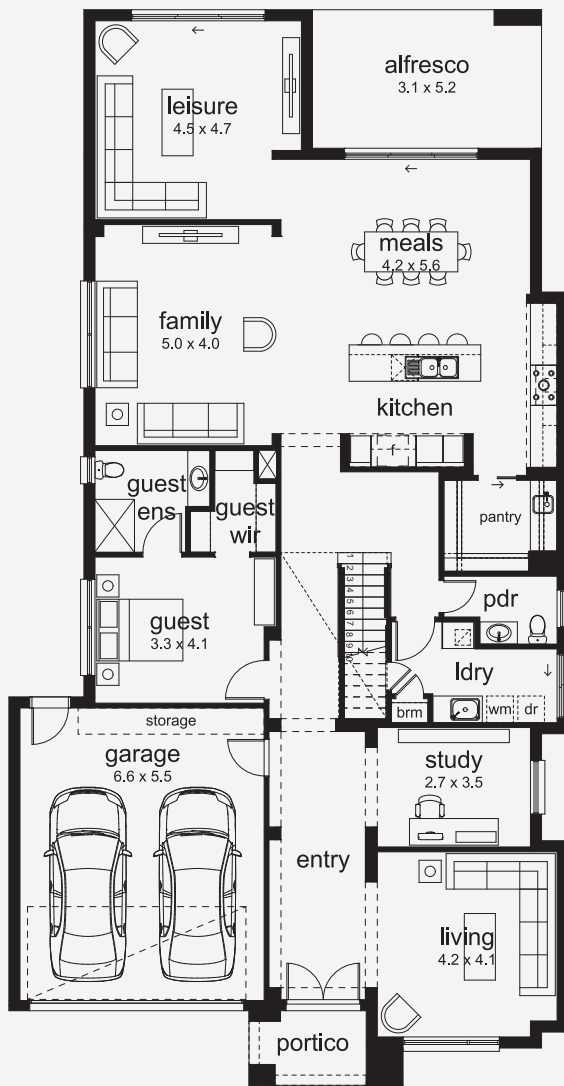
Min Lot Size (WxL)

14m x 32m

A Statement in Style and Space A masterpiece in double-storey living, the Balmoral is designed to impress at every turn. All bedrooms feature walk-in robes, while the luxurious master suite includes an oversized dressing room for a true sense of indulgence. With three spacious living areas downstairs, this home strikes the perfect balance between functionality and elegance, creating a haven for modern family life. Available in four or five-bedroom options and ranging from 38 to 50 squares, the Balmoral suits a wide range of lifestyles and needs.

14M+ LOT WIDTH

DOUBLE STOREY



Please note: Some floorplan option combinations may not be possible together. Please speak to a New Home Specialist.
Base price shown as of 24 April 2026 and is subject to change.

