

Balmoral 41



INSPIRATIONS

House Area

384.87 m²

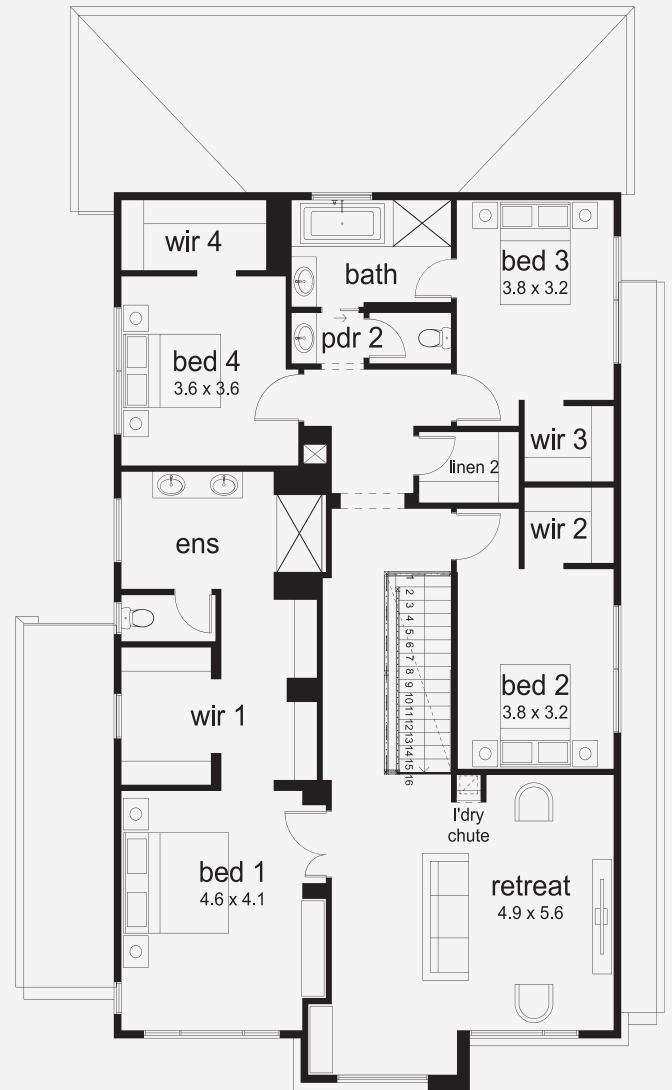
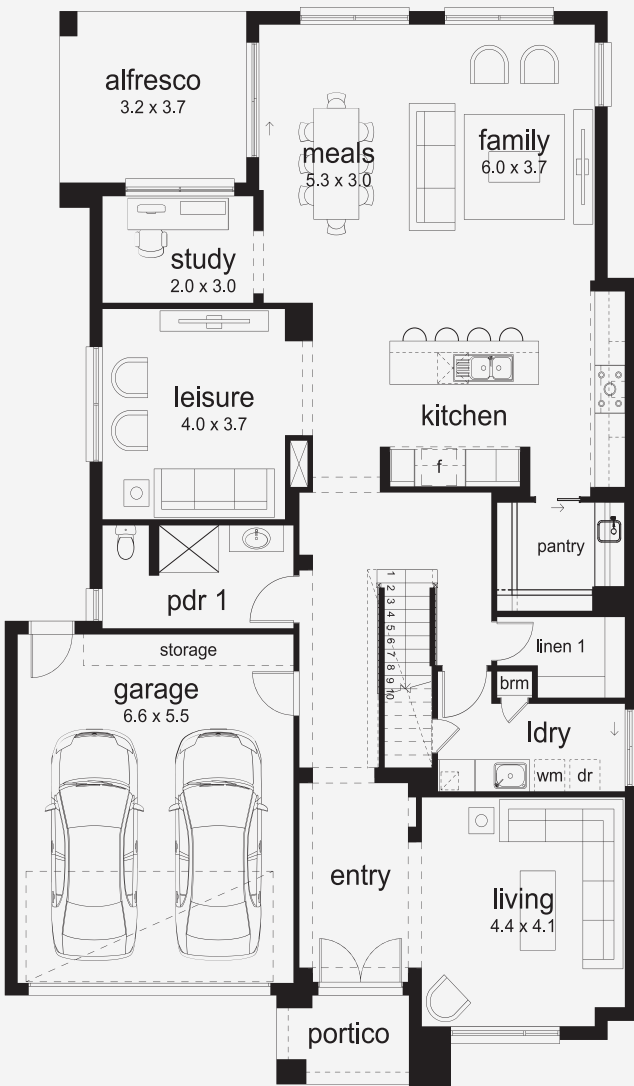
Min Lot Size (WxL)

14m x 28m

A Statement in Style and Space With its striking design and spacious floorplan, the Balmoral makes a statement from the moment you step inside. A standout master suite with an oversized dressing room adds a touch of everyday indulgence, while walk-in robes to all bedrooms mean there's storage for everyone. Featuring three large living spaces downstairs and the option of four or five bedrooms, this home brings together function and flair for growing families.

14M+ LOT WIDTH

DOUBLE STOREY



Please note: Some floorplan option combinations may not be possible together. Please speak to a New Home Specialist.
Base price shown as of 25 April 2026 and is subject to change.

