

Augusta 37



Spacious Living, Seamlessly Connected Designed for wider blocks, the Augusta delivers a considered layout for relaxed, single-level family living. A grand entrance sets the tone, flowing into a well-planned home featuring four bedrooms with walk-in robes, including a luxurious master suite. A separate living room offers privacy and flexibility, while the open-plan kitchen, meals and family area connects effortlessly to a generous alfresco. With a large pantry, laundry and mudroom all located conveniently off the kitchen, the Augusta combines space, style and functionality for everyday ease.

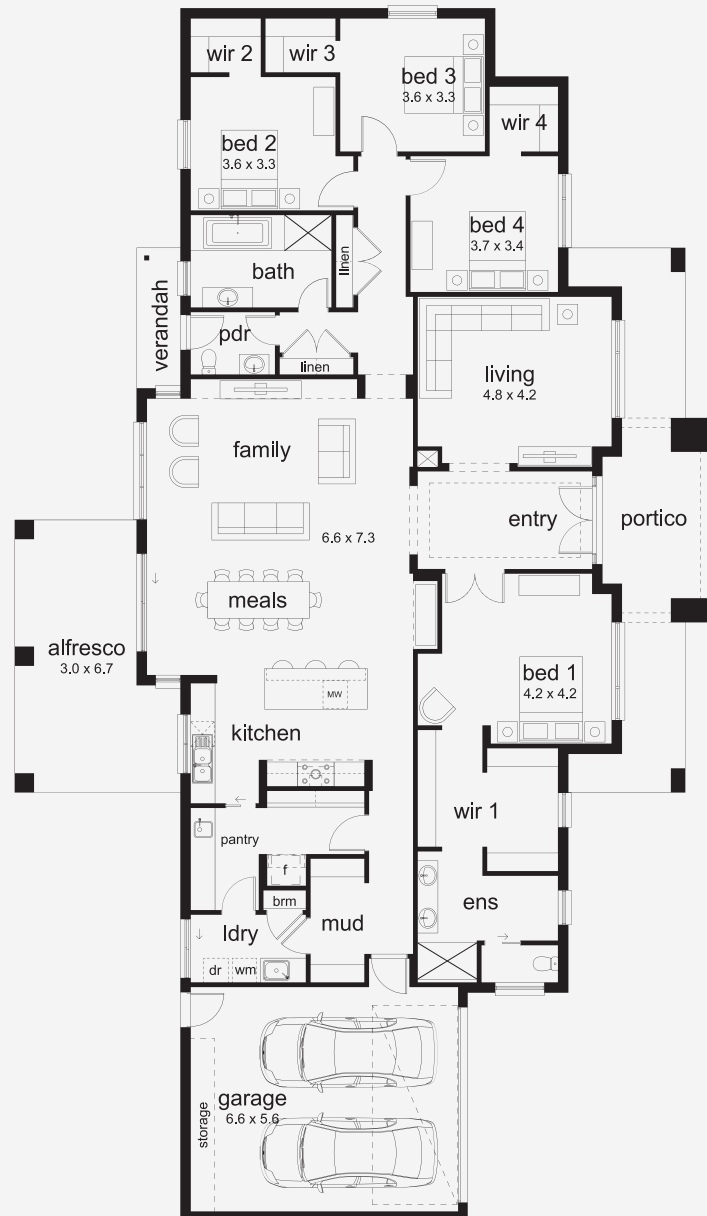
INSPIRATIONS

House Area

344.8 m²

Min Lot Size (WxL)

33m x 25m



33M+ LOT WIDTH

SINGLE STOREY

Please note: Some floorplan option combinations may not be possible together. Please speak to a New Home Specialist.
Base price shown as of 24 April 2026 and is subject to change.

