

# Armidale 34

 5
  3
  2

The Armidale 34, a double-storey home ideal for 14m+ blocks, features 5 bedrooms and 3 bathrooms with a 2-car garage. The ground floor boasts an open-plan living area with a large kitchen and walk-in pantry. A guest bedroom with a private ensuite and walk-in wardrobe, plus a spare lounge, provides impressive spaces for hosting. Upstairs, the floor plan includes three bedrooms with walk-in closets, a rumpus room, and a resort-style master suite to ensure relaxation and enjoyment for the entire family.

ELEVATE

House Area

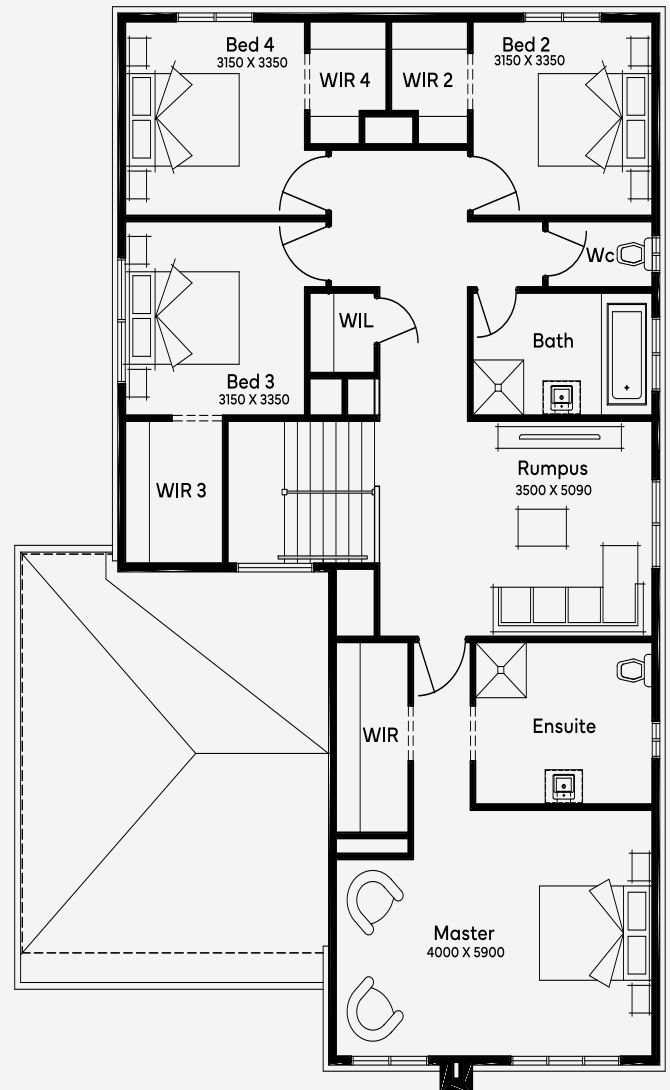
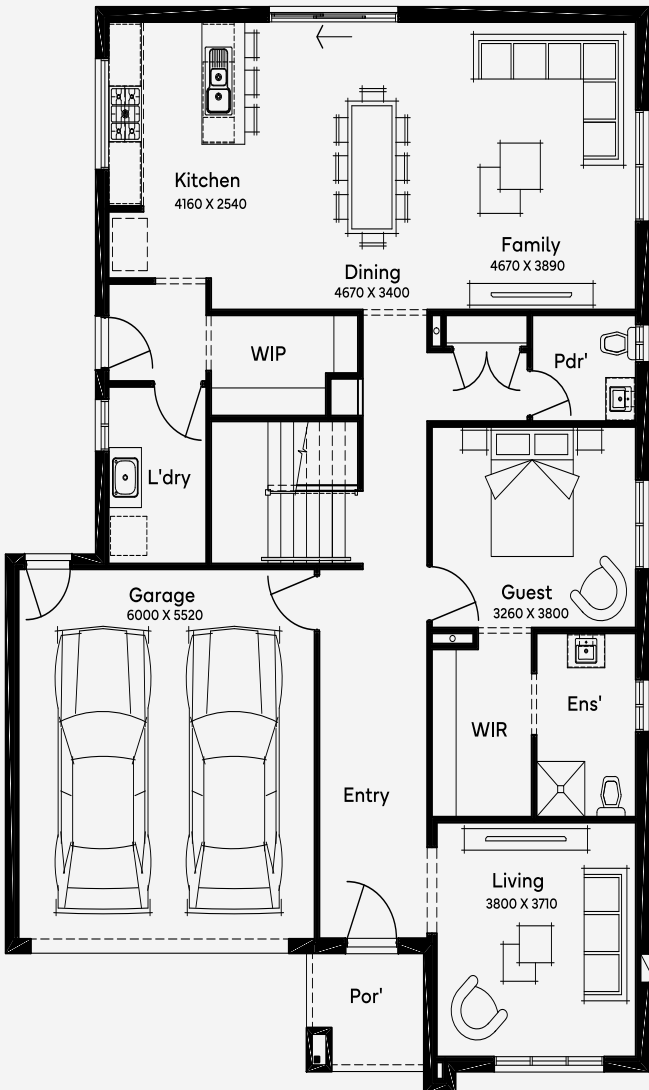
**320.3 m<sup>2</sup>**

Min Lot Size (WxL)

**14m x 25m**

14M+ LOT WIDTH

DOUBLE STOREY



Please note: Some floorplan option combinations may not be possible together. Please speak to a New Home Specialist.  
Base price shown as of 24 April 2026 and is subject to change.