

Aitken 27



The Aitken 27, designed for a 14m+ block, includes 4 bedrooms and 2 bathrooms with a 2-car garage in its well-considered floor plan. This single-storey home design captivates with a welcoming entryway leading to a private master retreat complete with a spacious ensuite and walk-in robe. The heart of the home is the open-plan kitchen and living area, featuring a walk-in pantry and a snug nook, perfect for family interactions and entertainment. The added spacious alfresco seamlessly merges indoor and outdoor living, catering to various lifestyles and family dynamics.

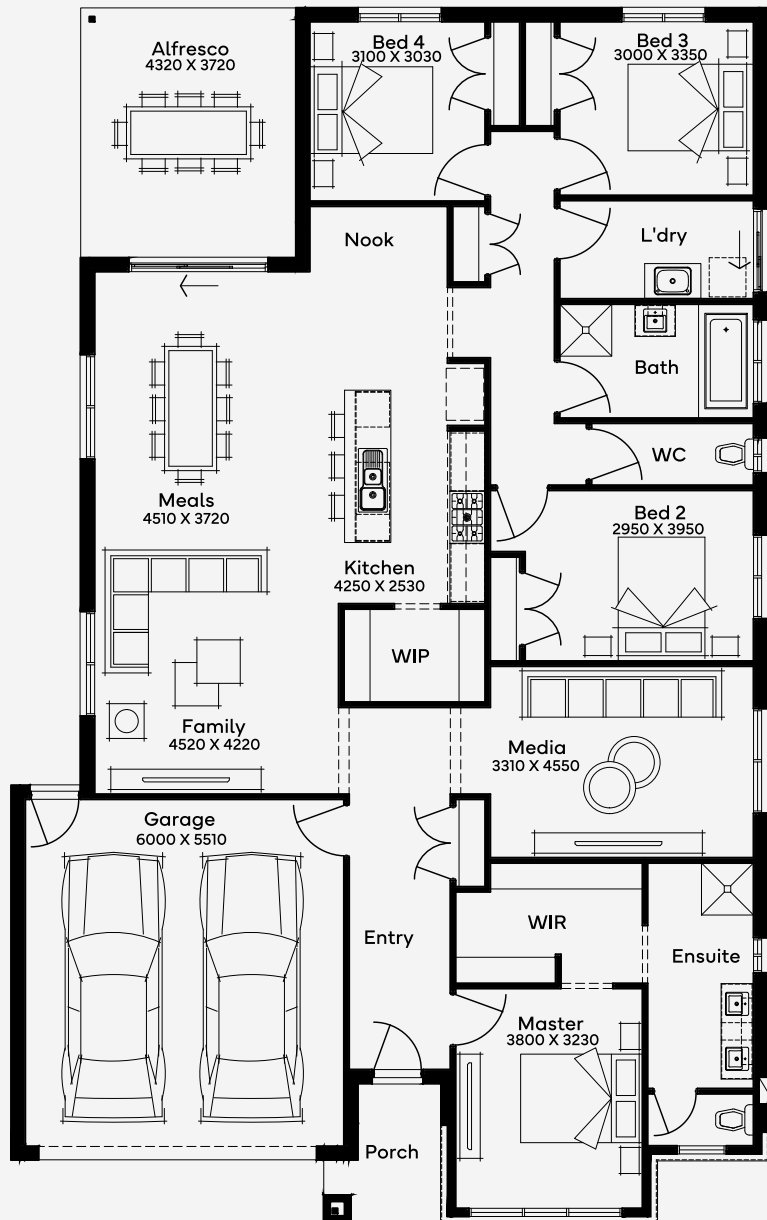
ELEVATE

House Area

250.3 m²

Min Lot Size (WxL)

14m x 30m



14M+ LOT WIDTH

SINGLE STOREY

Please note: Some floorplan option combinations may not be possible together. Please speak to a New Home Specialist.
Base price shown as of 24 April 2026 and is subject to change.

